



**RESOLUTION NO. 2024 - 0708**

- WHEREAS,** On this day, July 8, 2024, the Commissioners' Court of Hopkins County, Texas, met in a regularly scheduled meeting; and
- WHEREAS,** During such session the county roads located in Tira, Texas were considered and discussed; and
- WHEREAS,** The City of Tira is located in Precinct 4, the northeast portion of the county of Hopkins; and
- WHEREAS,** The records of Hopkins County show that Tira was incorporated in 1972 as described in Exhibit A attached hereto; and
- WHEREAS,** At the time of its incorporation, the public roadways were known by the residents of Tira as Oil Road 1 - Loop 1, Oil Road 2, Oil Road 3, Oil Road 4, Oil Road 5, and Oil Road 6 within Rural Route 3 of the U.S. Postal System; and
- WHEREAS,** Attached hereto as Exhibit B, the Commissioners Court Minutes provide records of Hopkins County in the beginning stages of the implementation of the 911 addressing system for Hopkins County in 1992; and
- WHEREAS,** The roadways were replaced with County Roads numbers including those within the boundaries of the City of Tira; and
- WHEREAS,** Oil Road 1/Loop 1 come to be known as CR 4615  
Oil Road 2 come to be known as CR 4615  
Oil Road 3 come to be known as CR 4613  
Oil Road 4 come to be known as CR 4592  
Oil Road 5 come to be known as CR 4612  
Oil Road 6 come to be known as CR 4612  
as assigned by the 911 addressing system; and
- WHEREAS,** The latitude/longitude coordinates for said roads are as follows:
  - County Road 4592 – Beginning at 33.32766812778665, -95.55683900879704  
Ending at 33.34325607485549, 95.56157773595588
  - County Road 4612 – Beginning at 33.327753500581, -95.54319816712008  
Ending at 33.32473840617741, -95.53051422590113
  - County Road 4613 – Beginning at 33.32650762618396, -95.56440561195893  
Ending at 33.335022391003655, -95.56422050364303

County Road 4614 – Beginning at 33.3284383992334, -95.56827845212543  
Ending at 33.33014998906352, -95.5682729305226  
County Road 4615 – Beginning at 33.326824954164415, -95.56655050278961  
Ending at 33.326930149501145, -95.57467947346875  
County Road 4618 – Beginning at 33.32853924531515, -95.57304650094068  
Ending at 33.3300045022404, -95.57373026878788; and

**WHEREAS,** A map of the City of Tira is attached hereto as Exhibit C; and

**WHEREAS,** Distance of said roads are as follows:

County Road 4592 – 1.92 miles  
County Road 4612 – 1.634 miles  
County Road 4613 – 0.59 mile  
County Road 4614 – 0.1 mile  
County Road 4615 – 0.678 mile  
County Road 4618 – 0.148 mile

**WHEREAS,** The existing measurement of the easements for said County Roads are measured as being 40 feet in width.

**WHEREAS,** The existing surface of said County Roads are as follows:

County Road 4592 – Oil  
County Road 4612 – Oil  
County Road 4613 – Oil  
County Road 4614 – Dirt  
County Road 4615 – Oil  
County Road 4618 – Rock

**WHEREAS,** The City of Tira has a need for maintenance of said public roads and easements; and

**WHEREAS,** The Commissioners Court of Hopkins County acting in its official function as established by Article V, Section 18 of the Texas Constitution, and Chapter 253 of the Texas Transportation Code, hereby determines and makes a specific finding that the dedication of a public interest in a road and right-of-way in the location described in the dedication at issue, will serve a public purpose and will benefit the people of the City of Tira as well as Hopkins, Texas; and

**WHEREAS,** It would be in the best interest of Hopkins County, and the citizens thereof, to accept said dedication; and

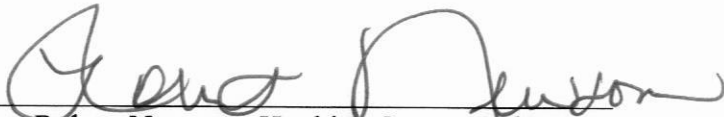
**WHEREAS,** The Hopkins County Commissioners Court desires to enter into agreement with the City of Tira to maintain the surface and right of ways of said County Roads according to the specifications named in the Hopkins County Rural Transportation Maintenance and Construction Guidelines attached hereto as Exhibit D; and

**NOW THEREFORE BE IT RESOLVED,** that the undersigned members of the Commissioners Court of Hopkins County, Texas, acting pursuant to the authority vested by law in said Court, does hereby accept the above and foregoing Dedication of Public Interest in Road and Right-of-Way, on behalf of and as the act and deed of Hopkins County, Texas.

**NOW THEREFORE BE IT FURTHER RESOLVED**, that the Commissioners' Court of Hopkins County and the City of Tira have considered, accepted and approved the dedication of the surface of County Roads 4592, 4612, 4613, 4614, 4615 and 4618 and its easements to Hopkins County for maintenance by the county.

**APPROVED** by the Hopkins County Commissioners' Court during the regularly scheduled meeting on this the 8<sup>th</sup> day of July, 2024.

**HOPKINS COUNTY, TEXAS**

  
\_\_\_\_\_  
Robert Newsom, Hopkins County Judge

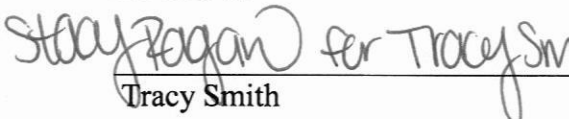
  
\_\_\_\_\_  
Mickey Barker, Commissioner, Pct. 1

  
\_\_\_\_\_  
Greg Anglin, Commissioner, Pct. 2

  
\_\_\_\_\_  
Wade Bartley, Commissioner, Pct. 3

  
\_\_\_\_\_  
Joe Price, Commissioner, Pct. 4

**ATTEST:**

  
\_\_\_\_\_  
Tracy Smith  
COUNTY CLERK



**CITY OF TIRA, TEXAS**

**APPROVED** by the Tira City Council during a special session on this the \_\_\_\_\_ day of July, 2024.

\_\_\_\_\_  
Allen Joslin, Mayor of the City of Tira

\_\_\_\_\_  
Yvonne Weir, Council Member

\_\_\_\_\_  
Evelyn Home, Council Member

\_\_\_\_\_  
Pat Dickens, Council Member

\_\_\_\_\_  
Janie Lewis, Council Member

\_\_\_\_\_  
Tami Joslin, Council Member

**ATTEST:**

\_\_\_\_\_  
Jan Vaughn  
City Secretary

NOW THEREFORE BE IT FURTHER RESOLVED, that the Commissioners' Court of Hopkins County and the City of Tira have considered, accepted and approved the dedication of the surface of County Roads 4592, 4612, 4613, 4614, 4615 and 4618 and its easements to Hopkins County for maintenance by the county.

APPROVED by the Hopkins County Commissioners' Court during the regularly scheduled meeting on this the 8<sup>th</sup> day of July, 2024.

HOPKINS COUNTY, TEXAS

Robert Newsom  
Robert Newsom, Hopkins County Judge

Mickey Barker  
Mickey Barker, Commissioner, Pct. 1

Greg Anglin  
Greg Anglin, Commissioner, Pct. 2

Wade Bartley  
Wade Bartley, Commissioner, Pct. 3

Joe Price  
Joe Price, Commissioner, Pct. 4

ATTEST:

Tracy Smith per Tracy Smith  
Tracy Smith  
COUNTY CLERK



CITY OF TIRA, TEXAS

APPROVED by the Tira City Council during a special session on this the 11<sup>th</sup> day of July, 2024.

Allen Joslin  
Allen Joslin, Mayor of the City of Tira

Yvonne Weir  
Yvonne Weir, Council Member

Evelyn Horne  
Evelyn Horne, Council Member

Pat Dickens  
Pat Dickens, Council Member

Janie Lewis  
Janie Lewis, Council Member

Tami Joslin  
Tami Joslin, Council Member

ATTEST:

Jan Vaughn  
Jan Vaughn  
City Secretary

EXHIBIT A

324  
PAGE 248  
VOL.

THE STATE OF TEXAS  
COUNTY OF HOPKINS

1774

WHEREAS, ON THE 7TH DAY OF NOVEMBER, 1972, FORTY-EIGHT RESIDENTS OF THE VILLAGE OF TIRA, HOPKINS COUNTY, TEXAS, FILED AND PRESENTED TO THE COUNTY JUDGE OF SAID COUNTY A PETITION OF THE FOLLOWING WORDS:

PETITION FOR ELECTION ORDER

TO THE HONORABLE COUNTY JUDGE OF HOPKINS COUNTY, TEXAS:

COMES NOW, THE UNDERSIGNED, ALL BEING RESIDENTS OF THE VILLAGE OF TIRA, HOPKINS COUNTY, TEXAS, AND ALL BEING QUALIFIED BY LAW TO SO PETITION THE COUNTY JUDGE, AND FILE THIS THEIR PETITION THAT THE COUNTY JUDGE OF HOPKINS COUNTY, TEXAS, ISSUE AN ELECTION ORDER FOR THE PURPOSE OF SUBMITTING TO THE RESIDENTS OF THE VILLAGE OF TIRA THE QUESTION OF INCORPORATING SAID VILLAGE UNDER THE LAWS OF THE STATE OF TEXAS. AND IN SUPPORT OF THIS PETITION THE UNDERSIGNED WOULD REPRESENT AND STAND READY TO PROVE THAT THE VILLAGE OF TIRA HEREINAFTER DESCRIBED AND REPRESENTED ON THE ATTACHED PLAT OR MAP OF THE PROPOSED INCORPORATED TOWN OF TIRA IS INHABITED BY MORE THAN 200 RESIDENT CITIZENS OF HOPKINS COUNTY, TEXAS, AND FURTHER THAT PROPOSED BOUNDARIES ARE CONTIGUOUS AND WITHIN THE COUNTY OF HOPKINS.

THE BOUNDARIES SOUGHT FOR THE INCORPORATION OF THE PROPOSED TOWN OF TIRA ARE AS FOLLOWS:

ALL THOSE CERTAIN TRACTS OR PARCELS OF LAND, SITUATED IN HOPKINS COUNTY, TEXAS, ABOUT 15 MILES NORTH FROM THE CITY OF SULPHUR SPRINGS, AND BEING PARTS OF THE FOLLOWING SURVEYS: WILLIAM GRAGG SURVEY, ABSTRACT NO. 338; ULYSSES AIGUIER SURVEY, ABSTRACT NO. 2; FRANCIS HOPKINS SURVEY, ABSTRACT NO. 1180; JAMES HENSLEY SURVEY, ABSTRACT NO. 430; AUGUSTUS BUTTS SURVEY, ABSTRACT NO. 48; E. CHESTER SURVEY, ABSTRACT NO. 1191; A. B. RUSHING SURVEY, ABSTRACT NO. 804; AND GIDEON HARRISON SURVEY, ABSTRACT NO. 407, AND DESCRIBED BY METES AND BOUNDS AS FOLLOWS, TO-WIT:

BEGINNING AT A POINT IN THE EAST R.O.W. LINE OF STATE HIGHWAY NO. 19, SAID POINT BEING THE S.W. CORNER OF A 62 ACRE TRACT OF LAND OWNED BY L. E. GOLDSMITH.

THENCE WEST AND CROSSING THE WEST R.O.W. LINE OF STATE HIGHWAY NO. 19 AT 100 FT. AND CONTINUING ON WEST FOR A TOTAL DISTANCE OF 300 FT. TO A POINT FOR CORNER.

THENCE NORTH 5 DEG. 23 MIN. EAST, AND PARALLEL WITH THE WEST R.O.W. LINE OF SAID HIGHWAY 19, 625 FT. TO A POINT FOR CORNER.

THENCE NORTH 84 DEG. 37 MIN. WEST 250.0 FT. TO A POINT FOR CORNER.

THENCE NORTH 5 DEG. 23 MIN. EAST 200.0 FT. TO A POINT FOR CORNER.

THENCE SOUTH 84 DEG. 37 MIN. EAST 250.0 FT. TO A POINT FOR CORNER.

THENCE NORTH 5 DEG. 23 MIN. EAST AND PARALLEL WITH THE WEST R.O.W. LINE OF STATE HIGHWAY 19, 4435 FT. TO A POINT.

THENCE NORTH 18 DEG. 49 MIN. WEST AND PARALLEL WITH THE WEST R.O.W. LINE OF SAID HIGHWAY No. 19, 1586.2 FT. TO A POINT.

THENCE NORTH 2 DEG. 12 MIN. WEST AND PARALLEL WITH THE WEST LINE OF SAID HIGHWAY, 2576.3 FT. TO A POINT FOR CORNER.

THENCE NORTH 88 DEG. 15 MIN. WEST AND PARALLEL WITH THE SOUTH R.O.W. LINE OF A COUNTY ROAD 1610.0 FT. TO A POINT FOR CORNER.

THENCE NORTH 31 DEG. 01 MIN. WEST AND PARALLEL WITH THE SOUTH R.O.W. LINE OF SAID COUNTY ROAD 876.0 FT. TO A POINT FOR CORNER.

THENCE SOUTH 87 DEG. 19 MIN. WEST AND PARALLEL WITH THE SAID R.O.W. LINE OF A COUNTY ROAD 720.0 FT. TO A POINT.

THENCE SOUTH 84 DEG. 56 MIN. WEST AND PARALLEL WITH THE SOUTH R.O.W. LINE OF THE SAID COUNTY ROAD 400.0 FT. TO A POINT.

THENCE NORTH 89 DEG. 44 MIN. WEST AND PARALLEL WITH THE SOUTH R. O. W. LINE OF SAID COUNTY ROAD, 690.0 FT. TO A POINT FOR CORNER.

THENCE NORTH 0, DEG. 16 MIN. EAST AND CROSSING THE SOUTH BOUNDARY LINE OF SAID COUNTY ROAD AT 200.0 FT. AND THE N.B. LINE AT 245.0 FT. AND IN ALL NORTH 0 DEG. 16 MIN. EAST FOR A TOTAL DISTANCE OF 445.0 FT. TO A POINT FOR CORNER.

THENCE SOUTH 89 DEG. 44 MIN. EAST AND PARALLEL WITH THE NORTH R.O.W. LINE OF SAID COUNTY ROAD, 673.0 FT. TO A POINT.

THENCE NORTH 84 DEG. 56 MIN. EAST AND PARALLEL WITH THE NORTH R.O.W. LINE OF SAID COUNTY ROAD 395.0 FT. TO A POINT.

THENCE NORTH 87 DEG. 19 MIN. EAST AND PARALLEL WITH THE NORTH R.O.W. LINE OF SAID COUNTY ROAD 310.0 FT. TO A POINT FOR CORNER.

THENCE NORTH 2 DEG. 42 MIN. WEST 377.5 TO A POINT FOR CORNER.

THENCE SOUTH 87 DEG. 19 MIN. EAST 100.0 FT. TO A POINT FOR CORNER.

THENCE SOUTH 2 DEG. EAST 377.5 FT. TO A POINT FOR CORNER.

THENCE NORTH 87 DEG. 19 MIN. EAST AND PARALLEL WITH THE NORTH R.O.W. LINE OF SAID COUNTY ROAD 590.0 FT. TO A POINT.

THENCE SOUTH 31 DEG. 01 MIN. EAST AND PARALLEL WITH THE N.B. LINE OF SAID ROAD 904.0 FT. TO A POINT.

THENCE SOUTH 88 DEG. 15 MIN. EAST AND PARALLEL WITH THE N.B. LINE OF SAID ROAD 1325.0 FT. TO A POINT FOR CORNER, SAID POINT BEING 200.0 FT. WEST FROM THE WEST R.O.W. LINE OF STATE HIGHWAY No. 19.

THENCE NORTH 2 DEG. 12 MIN. WEST AND PARALLEL WITH THE WEST R.O.W. LINE OF SAID HIGHWAY 19, 1452.0 FT. TO A POINT.

THENCE NORTH 15 DEG. 42 MIN. WEST AND PARALLEL WITH THE W.B. LINE OF SAID HIGHWAY 19, 4793.0 FT. TO A POINT FOR CORNER.

THENCE NORTH 88 DEG. 32 MIN. WEST AND PARALLEL WITH AND 200.0 FT. SOUTH OF THE SOUTH R.O.W. LINE OF A COUNTY ROAD, 852 FT. TO A POINT FOR CORNER.

THENCE NORTH 1 DEG. 28 MIN. EAST AND CROSSING THE SOUTH R.O.W. LINE OF SAID COUNTY ROAD AT 200.0 FT. AND THE NORTH R.O.W. LINE OF SAID ROAD AT 245.0 FT. AND IN ALL NORTH 1 DEG. 28 MIN. EAST 570.0 FT. TO A POINT FOR CORNER.

THENCE SOUTH 88 DEG. 32 MIN. EAST 100.0 FT. TO A POINT FOR CORNER.

THENCE SOUTH 1 DEG. 28 MIN. WEST 125.0 FT. TO A POINT FOR CORNER, SAID POINT BEING 200.0 FT. NORTH OF THE NORTH R.O.W. LINE OF SAID COUNTY ROAD.

THENCE SOUTH 88 DEG. 32 MIN. EAST AND PARALLEL WITH THE NORTH R.O.W. LINE OF SAID COUNTY ROAD 700.0 FT. TO A POINT FOR CORNER, 200.0 FT. WEST OF THE WEST R.O.W. LINE OF STATE HIGHWAY No. 19.

THENCE NORTH 0 DEG. 43 MIN. EAST OF AND PARALLEL WITH THE WEST R.O.W. LINE OF HIGHWAY 19, 1250.0 FT. TO A POINT FOR CORNER.

THENCE SOUTH 79 DEG. 17 MIN. EAST AND CROSSING THE WEST R.O.W. LINE OF SAID HIGHWAY 19 AT 200.0 FT. AND THE EAST R.O.W. LINE AT 300.0 FT. AND CONTINUING ON THE SAME BEARING FOR A TOTAL DISTANCE OF 500.0 FT. TO A POINT FOR CORNER.

325  
348  
100

326  
PAGE 348

THENCE SOUTH 0 DEG. 43 MIN. WEST AND PARALLEL WITH THE EAST R.O.W. LINE OF HIGHWAY 19, 1240.0 FT. TO A POINT FOR CORNER, SAID CORNER BEING 200.0 FT. NORTH OF THE NORTH LINE OF STATE F. M. HIGHWAY No. 1536.

THENCE NORTH 88 DEG. 32 MIN. EAST AND 200.0 FT. NORTH OF AND PARALLEL WITH THE NORTH R.O.W. LINE OF SAID F. M. HIGHWAY No. 1536, 262.0 FT. TO A POINT.

THENCE SOUTH 88 DEG. 22 MIN. EAST AND 200.0 FT. NORTH AND PARALLEL WITH SAID NORTH R.O.W. LINE OF F. M. ROAD No. 1536, 1985.6 FT. TO A POINT.

THENCE NORTH 56 DEG. 03 MIN. EAST AND 200.0 FT. NORTH OF THE NORTH R.O.W. LINE OF F. M. ROAD 1536, 847.0 FT. TO A POINT.

THENCE NORTH 0 DEG. 07 MIN. WEST AND 200.0 FT. WEST OF THE WEST LINE OF A PRIVATE DRIVEWAY, 752.0 FT., A STAKE FOR CORNER.

THENCE 0 DEG. 0 MIN. EAST 230.0 FT. TO A STAKE.

THENCE SOUTH 0 DEG 07 MIN. EAST WITH THE EAST LINE OF SAID PRIVATE ROAD 600.0 FT. TO A POINT, SAID POINT BEING 200.0 FT. NORTH OF AND PARALLEL WITH THE NORTH R.O.W. LINE OF F. M. ROAD No. 1536.

THENCE NORTH 56 DEG. 03 MIN. EAST 200 FT. NORTH OF AND PARALLEL WITH THE NORTH R.O.W. LINE OF SAID F. M. ROAD, 1032.0 FT. TO A POINT.

THENCE NORTH 66 DEG. 03 MIN. EAST 200 FT. NORTH OF AND PARALLEL WITH THE NORTH R.O.W. LINE OF F. M. ROAD No. 1536, 543.0 FT. TO A POINT.

THENCE NORTH 0 DEG. 24 MIN. WEST 200.0 FT. WEST OF AND PARALLEL WITH THE WEST R.O.W. LINE OF A COUNTY ROAD, 548.0 FT. TO A POINT.

THENCE NORTH 89 DEG. 36 MIN. EAST 475.0 FT. TO A POINT.

THENCE NORTH 0 DEG. 24 MIN. WEST 531.0 FT. TO A POINT.

THENCE NORTH 89 DEG. 36 MIN. EAST 890.4 FT. TO A POINT.

THENCE SOUTH 0 DEG. 24 MIN. EAST 531.0 FT. TO A POINT.

THENCE NORTH 89 DEG. 36 MIN. EAST 2012.0 FT. TO A POINT IN THE WEST R.O.W. LINE OF A COUNTY ROAD.

THENCE NORTH 0 DEG. 20 MIN. WEST WITH THE W.B. LINE OF SAID COUNTY ROAD, 1511.0 FT. TO A POINT.

THENCE SOUTH 89 DEG. 40 MIN. EAST 240 FT. TO A POINT.

THENCE SOUTH 0 DEG. 20 MIN. EAST AND 200 FT. EAST OF AND PARALLEL WITH THE E.B. LINE OF SAID COUNTY ROAD, 2039.0 FT. TO A POINT.

THENCE NORTH 85 DEG. 58 MIN. EAST, 677.0 FT. TO A POINT.

THENCE SOUTH 88 DEG. 05 MIN. EAST 531.0 FT. TO A POINT.

THENCE NORTH 59 DEG. 31 MIN. EAST 800.0 FT. TO A POINT, SAID POINT BEING 200.0 FT. WEST OF THE WEST R.O.W. LINE OF A COUNTY ROAD.

THENCE NORTH 1 DEG. 27 MIN. EAST AND 200 FT. WEST OF AND PARALLEL WITH THE WEST R.O.W. LINE OF SAID COUNTY ROAD, 5025 FT., TO A POINT FOR CORNER.

THENCE NORTH 88 DEG. 33 MIN. WEST AND 200 FT. SOUTH OF AND PARALLEL WITH THE SOUTH R.O.W. LINE OF SAID COUNTY ROAD, 1443.0 FT., A POINT FOR CORNER.

THENCE NORTH 1 DEG. 27 MIN. EAST AND CROSSING THE SOUTH R.O.W. LINE OF SAID ROAD AT 200 FT. AND THE NORTH R.O.W. LINE AT 234 FT. AND IN ALL NORTH 1 DEG. 27 MIN. EAST 434.0 FT., A POINT FOR CORNER.

THENCE SOUTH 88 DEG. 33 MIN. EAST AND 200 FT. NORTH OF AND PARALLEL WITH THE NORTH R.O.W. LINE OF SAID COUNTY ROAD, 1877.0 FT., TO A POINT FOR CORNER.

THENCE SOUTH 1 DEG. 27 MIN. WEST, AND 200 FT. EAST OF AND PARALLEL WITH THE EAST R.O.W. LINE OF A PUBLIC ROAD, 5365 FT., TO A POINT FOR CORNER, SAID POINT BEING 200 FT. NORTH OF THE NORTH R.O.W. LINE OF STATE F. M. ROAD 1536.

THENCE SOUTH 89 DEG. 04 MIN. EAST AND 200 FT. NORTH OF AND PARALLEL WITH SAID NORTH R.O.W. LINE, 1207 FT. TO A POINT.

327  
VOL 348 PAGE 347

THENCE NORTH 85 DEG. 0 MIN. EAST AND 200 FT. NORTH OF AND PARALLEL WITH THE NORTH R.O.W. LINE OF F. M. ROAD 1536, 841.0 FT. TO A POINT.

THENCE SOUTH 89 DEG. 02 MIN. EAST AND 200 FT. NORTH OF AND PARALLEL WITH THE NORTH R.O.W. LINE OF SAID F. M. ROAD No. 1536, 1657.0 FT. TO A POINT FOR CORNER, SAID POINT BEING 200 FT. WEST OF THE WEST R.O.W. LINE OF A COUNTY ROAD.

THENCE NORTH 1 DEG. 10 MIN. EAST AND 200 FT. WEST OF AND PARALLEL WITH THE WEST R.O.W. LINE OF SAID COUNTY ROAD, 1480 FT., TO A POINT FOR CORNER.

THENCE SOUTH 88 DEG. 50 MIN. EAST AND 200 FT. NORTH OF AND PARALLEL WITH THE N.B. LINE OF SAID COUNTY ROAD, 4486.4 FT., TO A POINT FOR CORNER.

THENCE SOUTH 1 DEG. 25 MIN. EAST AND 200 FT. EAST OF AND PARALLEL WITH THE EAST R.O.W. LINE OF SAID COUNTY ROAD AND CROSSING THE NORTH R.O.W. LINE OF STATE F. M. ROAD 1536 AT 3084.0 FT. AND THE SOUTH R.O.W. LINE OF SAID F. M. ROAD AT 3204.0 FT. AND IN ALL SOUTH 1 DEG. 25 MIN. EAST 3364.0 FT., TO A POINT FOR CORNER.

THENCE SOUTH 88 DEG. 35 MIN. WEST AND AT 200 FT. CROSSING THE EAST R.O.W. LINE OF A COUNTY ROAD AND AT 236.0 FT. CROSSING THE WEST R.O.W. LINE OF SAID ROAD AND IN ALL SOUTH 88 DEG. 35 MIN. WEST 436.0 FT., TO A POINT FOR CORNER.

THENCE NORTH 1 DEG. 25 MIN. EAST 200.0 FT. TO A POINT 200 FT. SOUTH OF THE SOUTH R.O.W. LINE OF F. M. ROAD 1536.

THENCE NORTH 59 DEG. 30 MIN. WEST 306.0 FT. TO A POINT.

THENCE NORTH 84 DEG. 43 MIN. WEST AND PARALLEL WITH THE SOUTH R.O.W. LINE OF SAID F. M. ROAD 1856.0 FT. TO A POINT.

THENCE NORTH 65 DEG. 20 MIN. WEST AND PARALLEL WITH SAID SOUTH R.O.W. LINE, 1685.0 FT., TO A POINT.

THENCE NORTH 88 DEG. 50 MIN. WEST AND CROSSING THE EAST R.O.W. LINE OF A COUNTY ROAD AT 235.0 FT. AND THE WEST R.O.W. LINE OF SAID ROAD AT 275.0 FT. AND IN ALL NORTH 88 DEG. 50 MIN. WEST FOR A TOTAL DISTANCE OF 500.0 FT., TO A POINT FOR CORNER.

THENCE NORTH 1 DEG. 10 MIN. EAST, 137.0 FT., TO A POINT FOR CORNER, 200 FT. SOUTH OF THE SOUTH R.O.W. LINE OF STATE F. M. ROAD 1536.

THENCE NORTH 89 DEG. 02 MIN. WEST AND 200 FT. SOUTH OF AND PARALLEL WITH THE SOUTH R.O.W. LINE OF SAID F. M. HIGHWAY, 1662 FT., TO A POINT.

THENCE SOUTH 85 DEG. 0 MIN. WEST AND 200 FT. SOUTH OF AND PARALLEL WITH THE SOUTH R.O.W. LINE OF F. M. ROAD No. 1536, 867 FT., TO A POINT.

THENCE NORTH 89 DEG. 04 MIN. WEST AND 200 FT. SOUTH OF AND PARALLEL WITH THE SOUTH R.O.W. LINE OF SAID F. M. ROAD 1536, 1418.0 FT., TO A POINT.

THENCE SOUTH 59 DEG. 31 MIN. WEST 927.0 FT. TO A POINT.

THENCE NORTH 88 DEG. 05 MIN. WEST, 651.0 FT., TO A POINT.

THENCE NORTH 85 DEG. 58 MIN. WEST 764.0 FT., TO A POINT.

THENCE NORTH 73 DEG. 58 MIN. WEST 640.0 FT., TO A POINT.

THENCE NORTH 87 DEG. 31 MIN. WEST AND 200 FT., SOUTH OF AND PARALLEL WITH THE SOUTH R.O.W. LINE OF STATE F. M. ROAD No. 1536, 1404.0 FT. TO A POINT.

THENCE NORTH 89 DEG. 24 MIN. WEST 1398.0 FT. TO A POINT.

THENCE SOUTH 56 DEG. 03 MIN. WEST, AND 200.0 FT. SOUTH OF

AND PARALLEL WITH THE SOUTH R.O.W. LINE OF SAID STATE F.M.

ROAD 1536, 2179.0 FT. TO A POINT.

THENCE NORTH 88 DEG. 22 MIN. WEST AND PARALLEL WITH THE SOUTH R.O.W. LINE OF F. M. ROAD 1536, 2118.6 FT. TO A POINT.

THENCE SOUTH 88 DEG. 32 MIN. WEST AND 200 FT. SOUTH OF AND

PARALLEL WITH THE SAID SOUTH R.O.W. LINE OF F. M. ROAD 1536,

217.0 FT. TO A POINT FOR CORNER, SAID POINT BEING 200 FT. EAST

OF THE EAST R.O.W. LINE OF STATE HIGHWAY No. 19.



328  
VOL. 348 PAGE 243

THENCE SOUTH 15 DEG. 42 MIN. EAST AND PARALLEL WITH AND 200 FT. EAST OF SAID EAST R.O.W. LINE OF STATE HIGHWAY NO. 19, 4572 FT. TO A POINT.

THENCE SOUTH 2 DEG. 12 MIN. EAST AND PARALLEL WITH AND 200 FT. EAST OF THE EAST LINE OF SAID HIGHWAY 19, 4448.8 FT. TO A POINT.

THENCE SOUTH 18 DEG. 49 MIN. EAST AND PARALLEL WITH AND 200 FT. EAST OF SAID EAST R.O.W. LINE OF HIGHWAY NO. 19, 1741.2 FT. TO A POINT.

THENCE SOUTH 5 DEG. 23 MIN. WEST AND PARALLEL WITH AND 200 FT. EAST OF SAID EAST R.O.W. LINE OF HIGHWAY 19, 5310.0 FT., A STAKE FOR CORNER IN THE S.B. LINE OF THE LAWRENCE E. GOLDSMITH 62 ACRE TRACT OF LAND;

THENCE WEST 0 DEG. 0 MIN. WITH THE S.B. LINE OF THE GOLDSMITH TRACT 200 FT., THE S.W. CORNER OF THE GOLDSMITH TRACT AND IN THE EAST R.O.W. LINE OF STATE HIGHWAY NO. 19 TO THE PLACE OF BEGINNING AND CONTAINING 740.709 ACRES OF LAND.

WHEREFORE, PREMISES CONSIDERED, THE UNDERSIGNED PRAY THAT THE COUNTY JUDGE MAKE AN ELECTION ORDER FOR HOLDING AN ELECTION FOR INCORPORATION OF THE TOWN OF TIRA, ON A DATE THEREIN STATED AND AT A PLACE WITHIN THE VILLAGE FOR THE PURPOSE OF SUBMITTING THE QUESTION TO A VOTE OF THE PEOPLE, THAT HE APPOINT AN OFFICER TO PRESIDE AT THE ELECTION AND THAT NOTICE AS REQUIRED BY LAW BE POSTED GIVING LAWFUL NOTICE TO THE RESIDENTS THEREOF; AND,

WHEREAS, IN PERSUANCE OF THE LAW, ON THE 7TH DAY OF

NOVEMBER, 1972, THE UNDERSIGNED COUNTY JUDGE OF SUCH COUNTY ISSUED AN ORDER FOR SUCH ELECTION OF THE FOLLOWING FORM AND TERMS, TO WIT:

ORDER OF COUNTY JUDGE FOR ELECTION ON INCORPORATION

THIS THE 7TH DAY OF NOVEMBER, 1972, CAME ON TO BE CONSIDERED BY THE COUNTY JUDGE OF HOPKINS COUNTY, TEXAS, THE PETITION OF FORTY-EIGHT (48) RESIDENT CITIZENS OF THE VILLAGE OF TIRA, HOPKINS COUNTY, TEXAS, FOR AN ORDER OF ELECTION FOR THE PURPOSE OF ENABLING THE RESIDENT CITIZENS OF SAID VILLAGE TO DETERMINE WHETHER SAID VILLAGE SHOULD BE INCORPORATED UNDER THE LAWS OF THE STATE OF TEXAS, AND IT APPEARING TO THE UNDERSIGNED JUDGE OF SUCH COUNTY THAT SUCH PETITION WAS FILED WITH SAID JUDGE ON THE 7TH DAY OF NOVEMBER, 1972, AND IT FURTHER APPEARING THAT A PLAT OR MAP OF THE PROPOSED INCORPORATED TOWN OF TIRA IS ATTACHED TO SAID PETITION AND FURTHER THAT MORE THAN TWO HUNDRED (200) RESIDENT CITIZENS OF HOPKINS COUNTY, TEXAS, LIVE WITHIN THE PROPOSED BOUNDARIES THEREOF AND FURTHER THAT SAID BOUNDARIES ARE CONTIGUOUS AND WITHIN THE COUNTY OF HOPKINS, STATE OF TEXAS:

NOW, THEREFORE, BY VIRTUE OF THE AUTHORITY INVESTED IN ME BY THE LAWS OF THE STATE OF TEXAS, I, L. E. GOLDSMITH, COUNTY JUDGE OF HOPKINS COUNTY, TEXAS, DO HEREBY ORDER THAT ON THE 18TH DAY OF NOVEMBER, 1972, AT THE TIRA COMMUNITY CENTER IN SUCH VILLAGE AN ELECTION SHALL BE HELD FOR THE PURPOSE OF ENABLING THE RESIDENT CITIZENS OF SUCH VILLAGE TO DETERMINE WHETHER SUCH VILLAGE SHALL BE INCORPORATED UNDER THE LAWS OF THE STATE OF TEXAS. THE BOUNDARIES SOUGHT FOR THE INCORPORATION OF THE PROPOSED TOWN OF TIRA ARE AS FOLLOWS:

329  
PAGE  
348  
VOL

ALL THOSE CERTAIN TRACTS OR PARCELS OF LAND, SITUATED IN HOPKINS COUNTY, TEXAS, ABOUT 13 MILES NORTH FROM THE CITY OF SULPHUR SPRINGS, AND BEING PARTS OF THE FOLLOWING SURVEYS: WILLIAM GRAGG SURVEY, ABSTRACT No. 338; ULYSSES AIGUIER SURVEY, ABSTRACT No. 2; FRANCIS HOPKINS SURVEY, ABSTRACT No. 1180; JAMES HENSLEY SURVEY, ABSTRACT No. 430; AUGUSTUS BUTTS SURVEY, ABSTRACT No. 48; E. CHESTER SURVEY, ABSTRACT No. 1191; A. B. RUSHING SURVEY, ABSTRACT No. 804; AND GIDEON HARRISON SURVEY, ABSTRACT No. 407, AND DESCRIBED BY METES AND BOUNDS AS FOLLOWS, TO-WIT:

BEGINNING AT A POINT IN THE EAST R.O.W. LINE OF STATE HIGHWAY No. 19, SAID POINT BEING THE S.W. CORNER OF A 62 ACRE TRACT OF LAND OWNED BY L. E. GOLDSMITH.

THENCE WEST AND CROSSING THE WEST R.O.W. LINE OF STATE HIGHWAY No. 19 AT 100 FT. AND CONTINUING ON WEST FOR A TOTAL DISTANCE OF 300 FT. TO A POINT FOR CORNER.

THENCE NORTH 5 DEG. 23 MIN. EAST, AND PARALLEL WITH THE WEST R.O.W. LINE OF SAID HIGHWAY 19, 625 FT. TO A POINT FOR CORNER.

THENCE NORTH 84 DEG. 37 MIN. WEST 250.0 FT. TO A POINT FOR CORNER.

THENCE NORTH 5 DEG. 23 MIN. EAST 200.0 FT. TO A POINT FOR CORNER.

THENCE SOUTH 84 DEG. 37 MIN. EAST 250.0 FT. TO A POINT FOR CORNER.

THENCE NORTH 5 DEG. 23 MIN. EAST AND PARALLEL WITH THE WEST R.O.W. LINE OF STATE HIGHWAY 19, 4455 FT. TO A POINT.

THENCE NORTH 18 DEG. 49 MIN. WEST, AND PARALLEL WITH THE WEST R.O.W. LINE OF SAID HIGHWAY No. 19, 1586.2 FT. TO A POINT.

THENCE NORTH 2 DEG. 12 MIN. WEST AND PARALLEL WITH THE WEST LINE OF SAID HIGHWAY, 2576.5 FT. TO A POINT FOR CORNER.

THENCE NORTH 88 DEG. 15 MIN. WEST AND PARALLEL WITH THE SOUTH R.O.W. LINE OF A COUNTY ROAD 1610.0 FT. TO A POINT FOR CORNER.

THENCE NORTH 31 DEG. 01 MIN. WEST AND PARALLEL WITH THE SOUTH R.O.W. LINE OF SAID COUNTY ROAD 876.0 FT. TO A POINT FOR CORNER.

THENCE SOUTH 87 DEG. 19 MIN. WEST AND PARALLEL WITH THE SAID R.O.W. LINE OF A COUNTY ROAD 720.0 FT. TO A POINT.

THENCE SOUTH 84 DEG. 56 MIN. WEST AND PARALLEL WITH THE SOUTH R.O.W. LINE OF THE SAID COUNTY ROAD 400.0 FT. TO A POINT.

THENCE NORTH 89 DEG. 44 MIN. WEST AND PARALLEL WITH THE SOUTH R. O. W. LINE OF SAID COUNTY ROAD, 690.0 FT. TO A POINT FOR CORNER.

THENCE NORTH 0, DEG. 16 MIN. EAST AND CROSSING THE SOUTH BOUNDARY LINE OF SAID COUNTY ROAD AT 200.0 FT. AND THE N.B. LINE AT 245.0 FT. AND IN ALL NORTH 0 DEG. 16 MIN. EAST FOR A TOTAL DISTANCE OF 445.0 FT. TO A POINT FOR CORNER.

THENCE SOUTH 89 DEG. 44 MIN. EAST AND PARALLEL WITH THE NORTH R.O.W. LINE OF SAID COUNTY ROAD, 673.0 FT. TO A POINT.

THENCE NORTH 84 DEG. 56 MIN. EAST AND PARALLEL WITH THE NORTH R.O.W. LINE OF SAID COUNTY ROAD 395.0 FT. TO A POINT.

THENCE NORTH 87 DEG. 19 MIN. EAST AND PARALLEL WITH THE NORTH R.O.W. LINE OF SAID COUNTY ROAD 310.0 FT. TO A POINT FOR CORNER.

330  
FACE  
VOL 348

THENCE NORTH 2 DEG. 42 MIN. WEST 377.5 TO A POINT FOR CORNER.  
THENCE SOUTH 87 DEG. 19 MIN. EAST 100.0 FT. TO A POINT FOR CORNER.  
THENCE SOUTH 2 DEG. EAST 377.5 FT. TO A POINT FOR CORNER.  
THENCE NORTH 87 DEG. 19 MIN. EAST AND PARALLEL WITH THE NORTH R.O.W. LINE OF SAID COUNTY ROAD 590.0 FT. TO A POINT.  
THENCE SOUTH 31 DEG. 01 MIN. EAST AND PARALLEL WITH THE N.B. LINE OF SAID ROAD 904.0 FT. TO A POINT.  
THENCE SOUTH 88 DEG. 15 MIN. EAST AND PARALLEL WITH THE N.B. LINE OF SAID ROAD 1325.0 FT. TO A POINT FOR CORNER, SAID POINT BEING 200.0 FT. WEST FROM THE WEST R.O.W. LINE OF STATE HIGHWAY No. 19.  
THENCE NORTH 2 DEG. 12 MIN. WEST AND PARALLEL WITH THE WEST R.O.W. LINE OF SAID HIGHWAY 19, 1452.0 FT. TO A POINT.  
THENCE NORTH 15 DEG. 42 MIN. WEST AND PARALLEL WITH THE W.B. LINE OF SAID HIGHWAY 19, 4793.0 FT. TO A POINT FOR CORNER.  
THENCE NORTH 88 DEG. 32 MIN. WEST AND PARALLEL WITH AND 200.0 FT. SOUTH OF THE SOUTH R.O.W. LINE OF A COUNTY ROAD, 852 FT. TO A POINT FOR CORNER.  
THENCE NORTH 1 DEG. 28 MIN. EAST AND CROSSING THE SOUTH R.O.W. LINE OF SAID COUNTY ROAD AT 200.0 FT. AND THE NORTH R.O.W. LINE OF SAID ROAD AT 245.0 FT. AND IN ALL NORTH 1 DEG. 28 MIN. EAST 570.0 FT. TO A POINT FOR CORNER.  
THENCE SOUTH 88 DEG. 32 MIN. EAST 100.0 FT. TO A POINT FOR CORNER.  
THENCE SOUTH 1 DEG. 28 MIN. WEST 125.0 FT. TO A POINT FOR CORNER, SAID POINT BEING 200.0 FT. NORTH OF THE NORTH R.O.W. LINE OF SAID COUNTY ROAD.  
THENCE SOUTH 88 DEG. 32 MIN. EAST AND PARALLEL WITH THE NORTH R.O.W. LINE OF SAID COUNTY ROAD 700.0 FT. TO A POINT FOR CORNER, 200.0 FT. WEST OF THE WEST R.O.W. LINE OF STATE HIGHWAY No. 19.  
THENCE NORTH 0 DEG. 43 MIN. EAST OF AND PARALLEL WITH THE WEST R.O.W. LINE OF HIGHWAY 19, 1250.0 FT. TO A POINT FOR CORNER.  
THENCE SOUTH 79 DEG. 17 MIN. EAST AND CROSSING THE WEST R.O.W. LINE OF SAID HIGHWAY 19 AT 200.0 FT. AND THE EAST R.O.W. LINE AT 300.0 FT. AND CONTINUING ON THE SAME BEARING FOR A TOTAL DISTANCE OF 500.0 FT. TO A POINT FOR CORNER.

THENCE SOUTH 0 DEG. 43 MIN. WEST AND PARALLEL WITH THE EAST R.O.W. LINE OF HIGHWAY 19, 1240.0 FT. TO A POINT FOR CORNER, SAID CORNER BEING 200.0 FT. NORTH OF THE NORTH LINE OF STATE F. M. HIGHWAY No. 1536.  
THENCE NORTH 88 DEG. 32 MIN. EAST AND 200.0 FT. NORTH OF AND PARALLEL WITH THE NORTH R.O.W. LINE OF SAID F. M. HIGHWAY No. 1536, 262.0 FT. TO A POINT.  
THENCE SOUTH 88 DEG. 22 MIN. EAST AND 200.0 FT. NORTH AND PARALLEL WITH SAID NORTH R.O.W. LINE OF F. M. ROAD No. 1536, 1985.6 FT. TO A POINT.  
THENCE NORTH 55 DEG. 03 MIN. EAST AND 200.0 FT. NORTH OF THE NORTH R.O.W. LINE OF F. M. ROAD 1536, 847.0 FT. TO A POINT.  
THENCE NORTH 0 DEG. 07 MIN. WEST AND 200.0 FT. WEST OF THE WEST LINE OF A PRIVATE DRIVEWAY, 752.0 FT., A STAKE FOR CORNER.  
THENCE 0 DEG. 0 MIN. EAST 230.0 FT. TO A STAKE.  
THENCE SOUTH 0 DEG. 07 MIN. EAST WITH THE EAST LINE OF SAID PRIVATE ROAD 600.0 FT. TO A POINT, SAID POINT BEING 200.0 FT. NORTH OF AND PARALLEL WITH THE NORTH R.O.W. LINE OF F. M. ROAD No. 1536.  
THENCE NORTH 55 DEG. 03 MIN. EAST 200 FT. NORTH OF AND PARALLEL WITH THE NORTH R.O.W. LINE OF SAID F. M. ROAD, 1052.0 FT. TO A POINT.  
THENCE NORTH 66 DEG. 03 MIN. EAST 200 FT. NORTH OF AND PARALLEL WITH THE NORTH R.O.W. LINE OF F. M. ROAD No. 1536, 543.0 FT. TO A POINT.  
THENCE NORTH 0 DEG. 24 MIN. WEST 200.0 FT. WEST OF AND PARALLEL WITH THE WEST R.O.W. LINE OF A COUNTY ROAD, 548.0 FT. TO A POINT.

331  
PAGE 348  
VOL 348

THENCE NORTH 89 DEG. 36 MIN. EAST 475.0 FT. TO A POINT.  
THENCE NORTH 0 DEG. 24 MIN. WEST 531.0 FT. TO A POINT.  
THENCE NORTH 89 DEG. 36 MIN. EAST 890.4 FT. TO A POINT.  
THENCE SOUTH 0 DEG. 24 MIN. EAST 531.0 FT. TO A POINT.  
THENCE NORTH 89 DEG. 36 MIN. EAST 2012.0 FT. TO A POINT  
IN THE WEST R.O.W. LINE OF A COUNTY ROAD.  
THENCE NORTH 0 DEG. 20 MIN. WEST WITH THE W.B. LINE OF SAID  
COUNTY ROAD, 1511.0 FT. TO A POINT.  
THENCE SOUTH 89 DEG. 40 MIN. EAST 240 FT. TO A POINT.  
THENCE SOUTH 0 DEG. 20 MIN. EAST AND 200 FT. EAST OF AND  
PARALLEL WITH THE E.B. LINE OF SAID COUNTY ROAD, 2039.0 FT. TO  
A POINT.  
THENCE NORTH 85 DEG. 58 MIN. EAST, 677.0 FT. TO A POINT.  
THENCE SOUTH 88 DEG. 05 MIN. EAST 531.0 FT. TO A POINT.  
THENCE NORTH 59 DEG. 31 MIN. EAST 800.0 FT. TO A POINT, SAID  
POINT BEING 200.0 FT. WEST OF THE WEST R.O.W. LINE OF A COUNTY ROAD.  
THENCE NORTH 1 DEG. 27 MIN. EAST AND 200 FT. WEST OF AND PAR-  
ALLEL WITH THE WEST R.O.W. LINE OF SAID COUNTY ROAD, 5025 FT., TO  
A POINT FOR CORNER.  
THENCE NORTH 88 DEG. 33 MIN. WEST AND 200 FT. SOUTH OF AND  
PARALLEL WITH THE SOUTH R.O.W. LINE OF SAID COUNTY ROAD, 1445.0  
FT., A POINT FOR CORNER.  
THENCE NORTH 1 DEG. 27 MIN. EAST AND CROSSING THE SOUTH R.O.W.  
LINE OF SAID ROAD AT 200 FT. AND THE NORTH R.O.W. LINE AT 234 FT.  
AND IN ALL NORTH 1 DEG. 27 MIN. EAST 434.0 FT., A POINT FOR CORNER.  
THENCE SOUTH 88 DEG. 33 MIN EAST AND 200 FT. NORTH OF AND  
PARALLEL WITH THE NORTH R.O.W. LINE OF SAID COUNTY ROAD, 1877.0  
FT., TO A POINT FOR CORNER.  
THENCE SOUTH 1 DEG. 27 MIN. WEST, AND 200 FT. EAST OF AND  
PARALLEL WITH THE EAST R.O.W. LINE OF A PUBLIC ROAD, 5365 FT., TO  
A POINT FOR CORNER, SAID POINT BEING 200 FT. NORTH OF THE NORTH  
R.O.W. LINE OF STATE F. M. ROAD 1536.  
THENCE SOUTH 89 DEG. 04 MIN. EAST AND 200 FT. NORTH OF AND  
PARALLEL WITH SAID NORTH R.O.W. LINE, 1207 FT. TO A POINT.

THENCE NORTH 85 DEG. 0 MIN. EAST AND 200 FT. NORTH OF AND  
PARALLEL WITH THE NORTH R.O.W. LINE OF F. M. ROAD 1536, 841.0  
FT. TO A POINT.  
THENCE SOUTH 89 DEG. 02 MIN. EAST AND 200 FT. NORTH OF AND  
PARALLEL WITH THE NORTH R.O.W. LINE OF SAID F. M. ROAD NO. 1536,  
1657.0 FT. TO A POINT FOR CORNER, SAID POINT BEING 200 FT. WEST  
OF THE WEST R.O.W. LINE OF A COUNTY ROAD.  
THENCE NORTH 1 DEG. 10 MIN. EAST AND 200 FT. WEST OF AND  
PARALLEL WITH THE WEST R.O.W. LINE OF SAID COUNTY ROAD, 1480 FT.,  
TO A POINT FOR CORNER.  
THENCE SOUTH 88 DEG. 50 MIN. EAST AND 200 FT. NORTH OF AND  
PARALLEL WITH THE N.B. LINE OF SAID COUNTY ROAD, 4485.4 FT.,  
TO A POINT FOR CORNER.  
THENCE SOUTH 1 DEG. 25 MIN. EAST AND 200 FT. EAST OF AND  
PARALLEL WITH THE EAST R.O.W. LINE OF SAID COUNTY ROAD AND CROSSING  
THE NORTH R.O.W. LINE OF STATE F. M. ROAD 1536 AT 3084.0 FT. AND  
THE SOUTH R.O.W. LINE OF SAID F. M. ROAD AT 3204.0 FT. AND IN ALL  
SOUTH 1 DEG. 25 MIN. EAST 3364.0 FT., TO A POINT FOR CORNER.  
THENCE SOUTH 88 DEG. 35 MIN. WEST AND AT 200 FT. CROSSING THE  
EAST R.O.W. LINE OF A COUNTY ROAD AND AT 236.0 FT. CROSSING THE  
WEST R.O.W. LINE OF SAID ROAD AND IN ALL SOUTH 88 DEG. 35 MIN.  
WEST 436.0 FT., TO A POINT FOR CORNER.  
THENCE NORTH 1 DEG. 25 MIN. EAST 200.0 FT. TO A POINT 200 FT.  
SOUTH OF THE SOUTH R.O.W. LINE OF F. M. ROAD 1536.  
THENCE NORTH 59 DEG. 30 MIN. WEST 306.0 FT. TO A POINT.  
THENCE NORTH 84 DEG. 43 MIN. WEST AND PARALLEL WITH THE SOUTH  
R.O.W. LINE OF SAID F. M. ROAD 1835.0 FT. TO A POINT.

THENCE NORTH 65 DEG. 20 MIN. WEST AND PARALLEL WITH SAID SOUTH R.O.W. LINE, 1685.0 FT., TO A POINT.  
THENCE NORTH 88 DEG. 50 MIN. WEST AND CROSSING THE EAST R.O.W. LINE OF A COUNTY ROAD AT 235.0 FT. AND THE WEST R.O.W. LINE OF SAID ROAD AT 275.0 FT. AND IN ALL NORTH 88 DEG. 50 MIN. WEST FOR A TOTAL DISTANCE OF 500.0 FT., TO A POINT FOR CORNER.  
THENCE NORTH 1 DEG. 10 MIN. EAST, 137.0 FT., TO A POINT FOR CORNER, 200 FT. SOUTH OF THE SOUTH R.O.W. LINE OF STATE F. M. ROAD 1536.

THENCE NORTH 89 DEG. 02 MIN. WEST AND 200 FT. SOUTH OF AND PARALLEL WITH THE SOUTH R.O.W. LINE OF SAID F. M. HIGHWAY, 1662 FT., TO A POINT.

THENCE SOUTH 85 DEG. 0 MIN. WEST AND 200 FT. SOUTH OF AND PARALLEL WITH THE SOUTH R.O.W. LINE OF F. M. ROAD NO. 1536, 867 FT., TO A POINT.

THENCE NORTH 89 DEG. 04 MIN. WEST AND 200 FT. SOUTH OF AND PARALLEL WITH THE SOUTH R.O.W. LINE OF SAID F. M. ROAD 1536, 1418.0 FT., TO A POINT.

THENCE NORTH 89 DEG. 36 MIN. EAST 475.0 FT. TO A POINT.

THENCE NORTH 0 DEG. 24 MIN. WEST 531.0 FT. TO A POINT.

THENCE NORTH 89 DEG. 36 MIN. EAST 890.4 FT. TO A POINT.

THENCE SOUTH 0 DEG. 24 MIN. EAST 531.0 FT. TO A POINT.

THENCE NORTH 89 DEG. 36 MIN. EAST 2012.0 FT. TO A POINT

IN THE WEST R.O.W. LINE OF A COUNTY ROAD.

THENCE NORTH 0 DEG. 20 MIN. WEST WITH THE W.B. LINE OF SAID COUNTY ROAD, 1511.0 FT. TO A POINT.

THENCE SOUTH 89 DEG. 40 MIN. EAST 240 FT. TO A POINT.

THENCE SOUTH 0 DEG. 20 MIN. EAST AND 200 FT. EAST OF AND PARALLEL WITH THE E.B. LINE OF SAID COUNTY ROAD, 2039.0 FT. TO A POINT.

THENCE NORTH 85 DEG. 58 MIN. EAST, 677.0 FT. TO A POINT.

THENCE SOUTH 88 DEG. 05 MIN. EAST 531.0 FT. TO A POINT.

THENCE NORTH 59 DEG. 31 MIN. EAST 800.0 FT. TO A POINT, SAID POINT BEING 200.0 FT. WEST OF THE WEST R.O.W. LINE OF A COUNTY ROAD.

THENCE NORTH 1 DEG. 27 MIN. EAST AND 200 FT. WEST OF AND PARALLEL WITH THE WEST R.O.W. LINE OF SAID COUNTY ROAD, 5025 FT., TO A POINT FOR CORNER.

THENCE NORTH 83 DEG. 33 MIN. WEST AND 200 FT. SOUTH OF AND PARALLEL WITH THE SOUTH R.O.W. LINE OF SAID COUNTY ROAD, 1445.0 FT., A POINT FOR CORNER.

THENCE NORTH 1 DEG. 27 MIN. EAST AND CROSSING THE SOUTH R.O.W. LINE OF SAID ROAD AT 200 FT. AND THE NORTH R.O.W. LINE AT 234 FT. AND IN ALL NORTH 1 DEG. 27 MIN. EAST 434.0 FT., A POINT FOR CORNER.

THENCE SOUTH 88 DEG. 33 MIN. EAST AND 200 FT. NORTH OF AND PARALLEL WITH THE NORTH R.O.W. LINE OF SAID COUNTY ROAD, 1877.0 FT., TO A POINT FOR CORNER.

THENCE SOUTH 1 DEG. 27 MIN. WEST, AND 200 FT. EAST OF AND PARALLEL WITH THE EAST R.O.W. LINE OF A PUBLIC ROAD, 5365 FT., TO A POINT FOR CORNER, SAID POINT BEING 200 FT. NORTH OF THE NORTH R.O.W. LINE OF STATE F. M. ROAD 1536.

THENCE SOUTH 89 DEG. 04 MIN. EAST AND 200 FT. NORTH OF AND PARALLEL WITH SAID NORTH R.O.W. LINE, 1207 FT. TO A POINT.

THENCE SOUTH 59 DEG. 31 MIN. WEST 927.0 FT. TO A POINT.

THENCE NORTH 88 DEG. 05 MIN. WEST, 531.0 FT., TO A POINT.

THENCE NORTH 85 DEG. 58 MIN. WEST 764.0 FT., TO A POINT.

THENCE NORTH 73 DEG. 58 MIN. WEST 640.0 FT., TO A POINT.

THENCE NORTH 87 DEG. 31 MIN. WEST AND 200 FT., SOUTH OF AND PARALLEL WITH THE SOUTH R.O.W. LINE OF STATE F. M. ROAD NO. 1536, 1404.0 FT. TO A POINT.

THENCE NORTH 89 DEG. 24 MIN. WEST 1398.0 FT. TO A POINT,  
THENCE SOUTH 56 DEG. 03 MIN. WEST, AND 200.0 FT. SOUTH OF  
AND PARALLEL WITH THE SOUTH R.O.W. LINE OF SAID STATE F.M.  
ROAD 1536, 2179.0 FT. TO A POINT.  
THENCE NORTH 88 DEG. 22 MIN. WEST AND PARALLEL WITH THE  
SOUTH R.O.W. LINE OF F. M. ROAD 1536, 2118.6 FT. TO A POINT.  
THENCE SOUTH 88 DEG. 32 MIN. WEST AND 200 FT. SOUTH OF AND  
PARALLEL WITH THE SAID SOUTH R.O.W. LINE OF F. M. ROAD 1536,  
217.0 FT. TO A POINT FOR CORNER, SAID POINT BEING 200 FT. EAST  
OF THE EAST R.O.W. LINE OF STATE HIGHWAY No. 19.

333  
348  
VOL

THENCE SOUTH 15 DEG. 42 MIN. EAST AND PARALLEL WITH AND  
200 FT. EAST OF SAID EAST R.O.W. LINE OF STATE HIGHWAY No. 19,  
4572 FT. TO A POINT.  
THENCE SOUTH 2 DEG. 12 MIN. EAST AND PARALLEL WITH AND  
200 FT. EAST OF THE EAST LINE OF SAID HIGHWAY 19, 4448.8 FT.  
TO A POINT.  
THENCE SOUTH 18 DEG. 49 MIN. EAST AND PARALLEL WITH AND  
200 FT. EAST OF SAID EAST R.O.W. LINE OF HIGHWAY No. 19, 1741.2  
FT. TO A POINT.  
THENCE SOUTH 5 DEG. 23 MIN. WEST AND PARALLEL WITH AND 200  
FT. EAST OF SAID EAST R.O.W. LINE OF HIGHWAY 19, 5310.0 FT., A  
STAKE FOR CORNER IN THE S.B. LINE OF THE LAWRENCE E. GOLDSMITH  
62 ACRE TRACT OF LAND.  
THENCE WEST 0 DEG. 0 MIN. WITH THE S.B. LINE OF THE GOLD-  
SMITH TRACT 200 FT., THE S.W. CORNER OF THE GOLDSMITH TRACT AND  
IN THE EAST R.O.W. LINE OF STATE HIGHWAY No. 19 TO THE PLACE OF  
BEGINNING AND CONTAINING 740.709 ACRES OF LAND.

THAT A POLL SHALL BE OPENED AND HELD FOR SUCH ELECTION AT THE  
COMMUNITY CENTER IN THE PROPOSED TOWN OF TIRA LOCATED IN VOTING  
PRECINCT No. 27 OF SUCH COUNTY, WHICH COMMUNITY CENTER IS THE BEST  
FOR THE PURPOSE AND IN ACCORDING TO ALL APPLICABLE LAW AND IS HERE  
SO DESIGNATED THE VOTING PLACE IN THE ELECTION PRECINCT FOR SAID  
ELECTION, AND THAT THE FOLLOWING PERSON, BEING A RESIDENT CITIZEN  
AND A QUALIFIED VOTER OF SUCH COUNTY AND A PROPER PERSON FOR THIS  
APPOINTMENT, HE: MILES HARGRAVE IS HEREBY APPOINTED PRESIDING  
OFFICER FOR SUCH ELECTION AND HE SHALL APPOINT TWO TO SERVE AS  
ELECTION JUDGES AND TWO TO SERVE AS CLERKS IN ASSISTING HIM IN  
HOLDING SAID ELECTION. IN WHICH CAPACITY HE AND HIS APPOINTEES  
SHALL SERVE, ALL OF WHOM SHALL ACT AND SERVE AS BY THE LAW PROVIDED,  
AND THAT THE POLL SHALL BE OPEN FROM 8:00 O'CLOCK A.M. TO 7:00  
O'CLOCK P.M.

ALL VOTERS AT SUCH ELECTION MUST BE QUALIFIED THEREUNTO BY AND  
UNDER THE CONSTITUTION AND LAW OF TEXAS. ALL VOTES AT SUCH ELECTION  
SHALL BE BY BALLOT, AND VOTERS DESIRING TO INCORPORATE SAID VILLAGE  
SHALL PLACE UPON THEIR BALLOT THE WORD "CORPORATION," AND THOSE OP-  
POSING INCORPORATION SHALL PLACE UPON THEIR BALLOT THE WORDS "NO  
CORPORATION."

337  
VOL 348 PAGE 348

WITHIN LEGAL TIME, THE PERSONS HOLDING SUCH ELECTION SHALL MAKE DUE RETURNS OF ALL VOTES CAST AT THEIR RESPECTIVE VOTING PLACE FOR AND AGAINST SAID PROPOSITION AT SAID ELECTION, TO THE JUDGE OF SAID COUNTY.

PUBLIC NOTICE OF THIS ORDER SHALL BE GIVEN, AT LEAST TEN (10) DAYS BEFORE THE DATE OF SUCH ELECTION, BY THE POSTING OF ADVERTISE- MENT THEREOF AT THREE PUBLIC PLACES IN THE VILLAGE FOR WHICH INCOR- PORATION IS SOUGHT.. AND THE SHERIFF OF SUCH COUNTY IS HEREBY ORDERED AND CAUSED TO REQUIRE SUCH POSTING AND TO MAKE RETURN THEREOF PROMPTLY ON THE FORM INDORSED ON THE REVERSE SIDE HEREOF, AND HE IS DULY ORDERED TO FILL OUT ANY BLANKS THEREIN, AND A FULL FIVE (5) DAYS BEFORE THE DAY SO SET FOR SUCH ELECTION, SUCH SHERIFF SHALL DELIVER WRITS OF ELECTION AND, ON COPIES THEREOF, MAKE RETURN THEREOF TO SUCH JUDGE BE- FORE SUCH DATE, WHICH WRITS SO DELIVERED WILL BE NOTIFICATION IN WRITING TO THE PRESIDING JUDGE TO WHOM THEY ARE DIRECTED, FORMS FOR WHICH WRITS OF ELECTION AND COPIES THEREOF AND FORMS OF INDORSED RE- TURNS, ACCOMPANY THE ORIGINAL COPY OF THIS ORDER; AND THE COUNTY CLERK OF THIS COUNTY IS ORDERED PROPERLY TO FILL OUT ANY BLANKS ON SUCH FORMS OF WRITS AND ISSUE AND DELIVER THEM AND TRUE COPIES THEREOF, ON RE- QUEST OF SUCH SHERIFF, TO HIM, AND SUCH SHERIFF IS ORDERED TO FILL OUT ANY BLANKS ON SUCH FORMS OF RETURN IN MAKING HIS SAID RETURNS.

WITNESS THE HAND OF THE COUNTY JUDGE OF HOPKINS COUNTY, TEXAS, THIS THE 7TH DAY OF NOVEMBER, 1972." AND

WHEREAS DUE NOTICE OF SUCH ELECTION WAS GIVEN AND THE SAME WAS HELD IN THE MANNER AND AT THE PLACE BY THE ORDER AND LAW DIRECTED, AND DUE RETURNS OF ALL VOTES CAST AT SUCH ELECTION HAVE BEEN MADE, AS REQUIRED BY LAW; AND

WHEREAS THE UNDERSIGNED, COUNTY JUDGE OF HOPKINS COUNTY, TEXAS, HAS TABULATED AND COUNTED SAID RETURNS AND ACERTAINED THE RESULT OF SAID ELECTION IN THE MANNER PRESCRIBED BY LAW, AND HAS FOUND THAT THE MAJORITY OF VOTES CAST AT SUCH ELECTION WERE FOR "CORPORATION"; AND SUCH IS THE RESULT OF SUCH ELECTION,

335  
VOL 348 PAGE 348

NOW, THEREFORE, I, L.E. GOLDSMITH, COUNTY JUDGE OF HOPKINS COUNTY, TEXAS, DO HEREBY ISSUE THIS PROCLAMATION, DECLARING THAT SUCH ELECTION RESULTED IN FAVOR OF INCORPORATION OF THE TOWN OF TIRA AND THAT THE INHABITANTS OF SAID TOWN ARE INCORPORATED WITHIN THE FOLLOWING BOUNDARIES:

TOWN OF TIRA

ALL THOSE CERTAIN TRACTS OR PARCELS OF LAND, SITUATED IN HOPKINS COUNTY, TEXAS, ABOUT 15 MILES NORTH FROM THE CITY OF SULPHUR SPRINGS, AND BEING PARTS OF THE FOLLOWING SURVEYS: WILLIAM GRAGG SURVEY, ABSTRACT No. 338; ULYSSES AIGUIER SURVEY, ABSTRACT No. 2; FRANCIS HOPKINS SURVEY, ABSTRACT No. 1180; JAMES HENSLEY SURVEY, ABSTRACT No. 430; AUGUSTUS BUTTS SURVEY, ABSTRACT No. 48; E. CHESTER SURVEY, ABSTRACT No. 1191; A. B. RUSHING SURVEY, ABSTRACT No. 804; AND GIDEON HARRISON SURVEY, ABSTRACT No. 407, AND DESCRIBED BY METES AND BOUNDS AS FOLLOWS, TO-WIT:

BEGINNING AT A POINT IN THE EAST R.O.W. LINE OF STATE HIGHWAY No. 19, SAID POINT BEING THE S.W. CORNER OF A 62 ACRE TRACT OF LAND OWNED BY L. E. GOLDSMITH.

THENCE WEST AND CROSSING THE WEST R.O.W. LINE OF STATE HIGHWAY No. 19 AT 100 FT. AND CONTINUING ON WEST FOR A TOTAL DISTANCE OF 300 FT. TO A POINT FOR CORNER;

THENCE NORTH 5 DEG. 23 MIN. EAST, AND PARALLEL WITH THE WEST R.O.W. LINE OF SAID HIGHWAY 19, 625 FT. TO A POINT FOR CORNER.

THENCE NORTH 84 DEG. 37 MIN. WEST 250.0 FT. TO A POINT FOR CORNER.

THENCE NORTH 5 DEG. 23 MIN. EAST 200.0 FT. TO A POINT FOR CORNER.

THENCE SOUTH 84 DEG. 37 MIN. EAST 250.0 FT. TO A POINT FOR CORNER.

THENCE NORTH 5 DEG. 23 MIN. EAST AND PARALLEL WITH THE WEST R.O.W. LINE OF STATE HIGHWAY 19, 4435 FT. TO A POINT.

THENCE NORTH 18 DEG. 49 MIN. WEST, AND PARALLEL WITH THE WEST R.O.W. LINE OF SAID HIGHWAY No. 19, 1586.2 FT. TO A POINT.

THENCE NORTH 2 DEG. 12 MIN. WEST AND PARALLEL WITH THE WEST LINE OF SAID HIGHWAY, 2576.3 FT. TO A POINT FOR CORNER.

THENCE NORTH 88 DEG. 15 MIN. WEST AND PARALLEL WITH THE SOUTH R.O.W. LINE OF A COUNTY ROAD 1610.0 FT. TO A POINT FOR CORNER.

THENCE NORTH 31 DEG. 01 MIN. WEST AND PARALLEL WITH THE SOUTH R.O.W. LINE OF SAID COUNTY ROAD 876.0 FT. TO A POINT FOR CORNER.

THENCE SOUTH 87 DEG. 19 MIN. WEST AND PARALLEL WITH THE SAID R.O.W. LINE OF A COUNTY ROAD 720.0 FT. TO A POINT.

THENCE SOUTH 84 DEG. 56 MIN. WEST AND PARALLEL WITH THE SOUTH R.O.W. LINE OF THE SAID COUNTY ROAD 400.0 FT. TO A POINT.

THENCE NORTH 89 DEG. 44 MIN. WEST AND PARALLEL WITH THE SOUTH R. O. W. LINE OF SAID COUNTY ROAD, 690.0 FT. TO A POINT FOR CORNER.



THENCE NORTH 0, DEG. 16 MIN. EAST AND CROSSING THE SOUTH BOUNDARY LINE OF SAID COUNTY ROAD AT 200.0 FT. AND THE N.B. LINE AT 245.0 FT. AND IN ALL NORTH 0 DEG. 16 MIN. EAST FOR A TOTAL DISTANCE OF 445.0 FT. TO A POINT FOR CORNER.

THENCE SOUTH 89 DEG. 44 MIN. EAST AND PARALLEL WITH THE NORTH R.O.W. LINE OF SAID COUNTY ROAD, 673.0 FT. TO A POINT.

THENCE NORTH 84 DEG. 56 MIN. EAST AND PARALLEL WITH THE NORTH R.O.W. LINE OF SAID COUNTY ROAD 395.0 FT. TO A POINT.

THENCE NORTH 87 DEG. 19 MIN. EAST AND PARALLEL WITH THE NORTH R.O.W. LINE OF SAID COUNTY ROAD 310.0 FT. TO A POINT FOR CORNER.

THENCE NORTH 2 DEG. 42 MIN. WEST 377.5 TO A POINT FOR CORNER.

THENCE SOUTH 87 DEG. 19 MIN. EAST 100.0 FT. TO A POINT FOR CORNER.

THENCE SOUTH 2 DEG. EAST 377.5 FT. TO A POINT FOR CORNER.

THENCE NORTH 87 DEG. 19 MIN. EAST AND PARALLEL WITH THE NORTH R.O.W. LINE OF SAID COUNTY ROAD 590.0 FT. TO A POINT.

THENCE SOUTH 31 DEG. 01 MIN. EAST AND PARALLEL WITH THE N.B. LINE OF SAID ROAD 904.0 FT. TO A POINT.

THENCE SOUTH 88 DEG. 15 MIN. EAST AND PARALLEL WITH THE N.B. LINE OF SAID ROAD 1325.0 FT. TO A POINT FOR CORNER, SAID POINT BEING 200.0 FT. WEST FROM THE WEST R.O.W. LINE OF STATE HIGHWAY No. 19.

THENCE NORTH 2 DEG. 12 MIN. WEST AND PARALLEL WITH THE WEST R.O.W. LINE OF SAID HIGHWAY 19, 1452.0 FT. TO A POINT.

THENCE NORTH 15 DEG. 42 MIN. WEST AND PARALLEL WITH THE W.B. LINE OF SAID HIGHWAY 19, 4793.0 FT. TO A POINT FOR CORNER.

THENCE NORTH 88 DEG. 32 MIN. WEST AND PARALLEL WITH AND 200.0 FT. SOUTH OF THE SOUTH R.O.W. LINE OF A COUNTY ROAD, 352 FT. TO A POINT FOR CORNER.

THENCE NORTH 1 DEG. 28 MIN. EAST AND CROSSING THE SOUTH R.O.W. LINE OF SAID COUNTY ROAD AT 200.0 FT. AND THE NORTH R.O.W. LINE OF SAID ROAD AT 245.0 FT. AND IN ALL NORTH 1 DEG. 28 MIN. EAST 570.0 FT. TO A POINT FOR CORNER.

THENCE SOUTH 88 DEG. 32 MIN. EAST 100.0 FT. TO A POINT FOR CORNER.

THENCE SOUTH 1 DEG. 28 MIN. WEST 125.0 FT. TO A POINT FOR CORNER, SAID POINT BEING 200.0 FT. NORTH OF THE NORTH R.O.W. LINE OF SAID COUNTY ROAD.

THENCE SOUTH 88 DEG. 32 MIN. EAST AND PARALLEL WITH THE NORTH R.O.W. LINE OF SAID COUNTY ROAD 700.0 FT. TO A POINT FOR CORNER, 200.0 FT. WEST OF THE WEST R.O.W. LINE OF STATE HIGHWAY No. 19.

THENCE NORTH 0 DEG. 43 MIN. EAST OF AND PARALLEL WITH THE WEST R.O.W. LINE OF HIGHWAY 19, 1250.0 FT. TO A POINT FOR CORNER.

THENCE SOUTH 79 DEG. 17 MIN. EAST AND CROSSING THE WEST R.O.W. LINE OF SAID HIGHWAY 19 AT 200.0 FT. AND THE EAST R.O.W. LINE AT 300.0 FT. AND CONTINUING ON THE SAME BEARING FOR A TOTAL DISTANCE OF 500.0 FT. TO A POINT FOR CORNER.

THENCE SOUTH 0 DEG. 43 MIN. WEST AND PARALLEL WITH THE EAST R.O.W. LINE OF HIGHWAY 19, 1240.0 FT. TO A POINT FOR CORNER, SAID CORNER BEING 200.0 FT. NORTH OF THE NORTH LINE OF STATE F. M. HIGHWAY No. 1536.

THENCE NORTH 88 DEG. 32 MIN. EAST AND 200.0 FT. NORTH OF AND PARALLEL WITH THE NORTH R.O.W. LINE OF SAID F. M. HIGHWAY No. 1536, 262.0 FT. TO A POINT.

THENCE SOUTH 88 DEG. 22 MIN. EAST AND 200.0 FT. NORTH AND PARALLEL WITH SAID NORTH R.O.W. LINE OF F. M. ROAD No. 1536, 1985.6 FT. TO A POINT.

337

THENCE NORTH 56 DEG. 03 MIN. EAST AND 200.0 FT. NORTH OF THE NORTH R.O.W. LINE OF F. M. ROAD 1536, 847.0 FT. TO A POINT.  
THENCE NORTH 0 DEG. 07 MIN. WEST AND 200.0 FT. WEST OF THE WEST LINE OF A PRIVATE DRIVEWAY, 752.0 FT., A STAKE FOR CORNER.  
THENCE 0 DEG. 0 MIN. EAST 230.0 FT. TO A STAKE.  
THENCE SOUTH 0 DEG 07 MIN. EAST WITH THE EAST LINE OF SAID PRIVATE ROAD 600.0 FT. TO A POINT, SAID POINT BEING 200.0 FT. NORTH OF AND PARALLEL WITH THE NORTH R.O.W. LINE OF F. M. ROAD No. 1536.

THENCE NORTH 56 DEG. 03 MIN. EAST 200 FT. NORTH OF AND PARALLEL WITH THE NORTH R.O.W. LINE OF SAID F. M. ROAD, 1032.0 FT. TO A POINT.

THENCE NORTH 66 DEG. 03 MIN. EAST 200 FT. NORTH OF AND PARALLEL WITH THE NORTH R.O.W. LINE OF F. M. ROAD No. 1536, 543.0 FT. TO A POINT.

THENCE NORTH 0 DEG. 24 MIN. WEST 200.0 FT. WEST OF AND PARALLEL WITH THE WEST R.O.W. LINE OF A COUNTY ROAD, 548.0 FT. TO A POINT.

THENCE NORTH 89 DEG. 36 MIN. EAST 475.0 FT. TO A POINT.

THENCE NORTH 0 DEG. 24 MIN. WEST 531.0 FT. TO A POINT.

THENCE NORTH 89 DEG. 36 MIN. EAST 890.4 FT. TO A POINT.

THENCE SOUTH 0 DEG. 24 MIN. EAST 531.0 FT. TO A POINT.

THENCE NORTH 89 DEG. 36 MIN. EAST 2012.0 FT. TO A POINT IN THE WEST R.O.W. LINE OF A COUNTY ROAD.

THENCE NORTH 0 DEG. 20 MIN. WEST WITH THE W.B. LINE OF SAID COUNTY ROAD, 1511.0 FT. TO A POINT.

THENCE SOUTH 89 DEG. 40 MIN. EAST 240 FT. TO A POINT.

THENCE SOUTH 0 DEG. 20 MIN. EAST AND 200 FT. EAST OF AND PARALLEL WITH THE E.B. LINE OF SAID COUNTY ROAD, 2039.0 FT. TO A POINT.

THENCE NORTH 85 DEG. 58 MIN. EAST, 677.0 FT. TO A POINT.

THENCE SOUTH 88 DEG. 05 MIN. EAST 531.0 FT. TO A POINT.

THENCE NORTH 59 DEG. 31 MIN. EAST 800.0 FT. TO A POINT, SAID POINT BEING 200.0 FT. WEST OF THE WEST R.O.W. LINE OF A COUNTY ROAD.

THENCE NORTH 1 DEG. 27 MIN. EAST AND 200 FT. WEST OF AND PARALLEL WITH THE WEST R.O.W. LINE OF SAID COUNTY ROAD, 5025 FT., TO A POINT FOR CORNER.

THENCE NORTH 88 DEG. 33 MIN. WEST AND 200 FT. SOUTH OF AND PARALLEL WITH THE SOUTH R.O.W. LINE OF SAID COUNTY ROAD, 1443.0 FT., A POINT FOR CORNER.

THENCE NORTH 1 DEG. 27 MIN. EAST AND CROSSING THE SOUTH R.O.W. LINE OF SAID ROAD AT 200 FT. AND THE NORTH R.O.W. LINE AT 234 FT. AND IN ALL NORTH 1 DEG. 27 MIN. EAST 434.0 FT., A POINT FOR CORNER.

THENCE SOUTH 88 DEG. 33 MIN EAST AND 200 FT. NORTH OF AND PARALLEL WITH THE NORTH R.O.W. LINE OF SAID COUNTY ROAD, 1877.0 FT., TO A POINT FOR CORNER.

THENCE SOUTH 1 DEG. 27 MIN. WEST, AND 200 FT. EAST OF AND PARALLEL WITH THE EAST R.O.W. LINE OF A PUBLIC ROAD, 5365 FT., TO A POINT FOR CORNER, SAID POINT BEING 200 FT. NORTH OF THE NORTH R.O.W. LINE OF STATE F. M. ROAD 1536.

THENCE SOUTH 89 DEG. 04 MIN. EAST AND 200 FT. NORTH OF AND PARALLEL WITH SAID NORTH R.O.W. LINE, 1207 FT. TO A POINT.

THENCE NORTH 85 DEG. 0 MIN. EAST AND 200 FT. NORTH OF AND PARALLEL WITH THE NORTH R.O.W. LINE OF F. M. ROAD 1536, 841.0 FT. TO A POINT.

THENCE SOUTH 89 DEG. 02 MIN. EAST AND 200 FT. NORTH OF AND PARALLEL WITH THE NORTH R.O.W. LINE OF SAID F. M. ROAD No. 1536, 1657.0 FT. TO A POINT FOR CORNER, SAID POINT BEING 200 FT. WEST OF THE WEST R.O.W. LINE OF A COUNTY ROAD.

THENCE NORTH 1 DEG. 10 MIN. EAST AND 200 FT. WEST OF AND PARALLEL WITH THE WEST R.O.W. LINE OF SAID COUNTY ROAD, 1480 FT., TO A POINT FOR CORNER.

THENCE SOUTH 88 DEG. 50 MIN. EAST AND 200 FT. NORTH OF AND PARALLEL WITH THE N.B. LINE OF SAID COUNTY ROAD, 4486.4 FT., TO A POINT FOR CORNER.

238  
VOL 348 PAGE 125

THENCE SOUTH 1 DEG. 25 MIN. EAST AND 200 FT. EAST OF AND PARALLEL WITH THE EAST R.O.W. LINE OF SAID COUNTY ROAD AND CROSSING THE NORTH R.O.W. LINE OF STATE F. M. ROAD 1536 AT 3084.0 FT. AND THE SOUTH R.O.W. LINE OF SAID F. M. ROAD AT 3204.0 FT. AND IN ALL SOUTH 1 DEG. 25 MIN. EAST 3364.0 FT., TO A POINT FOR CORNER.

THENCE SOUTH 88 DEG. 35 MIN. WEST AND AT 200 FT. CROSSING THE EAST R.O.W. LINE OF A COUNTY ROAD AND AT 236.0 FT. CROSSING THE WEST R.O.W. LINE OF SAID ROAD AND IN ALL SOUTH 88 DEG. 35 MIN. WEST 436.0 FT., TO A POINT FOR CORNER.

THENCE NORTH 1 DEG. 25 MIN. EAST 200.0 FT. TO A POINT 200 FT. SOUTH OF THE SOUTH R.O.W. LINE OF F. M. ROAD 1536.

THENCE NORTH 59 DEG. 30 MIN. WEST 306.0 FT. TO A POINT.

THENCE NORTH 84 DEG. 43 MIN. WEST AND PARALLEL WITH THE SOUTH R.O.W. LINE OF SAID F. M. ROAD 1836.0 FT. TO A POINT.

THENCE NORTH 65 DEG. 20 MIN. WEST AND PARALLEL WITH SAID SOUTH R.O.W. LINE, 1683.0 FT., TO A POINT.

THENCE NORTH 88 DEG. 50 MIN. WEST AND CROSSING THE EAST R.O.W. LINE OF A COUNTY ROAD AT 235.0 FT. AND THE WEST R.O.W. LINE OF SAID ROAD AT 275.0 FT. AND IN ALL NORTH 88 DEG. 50 MIN. WEST FOR A TOTAL DISTANCE OF 500.0 FT., TO A POINT FOR CORNER.

THENCE NORTH 1 DEG. 10 MIN. EAST, 137.0 FT., TO A POINT FOR CORNER, 200 FT. SOUTH OF THE SOUTH R.O.W. LINE OF STATE F. M. ROAD 1536.

THENCE NORTH 89 DEG. 02 MIN. WEST AND 200 FT. SOUTH OF AND PARALLEL WITH THE SOUTH R.O.W. LINE OF SAID F. M. HIGHWAY, 1662 FT., TO A POINT.

THENCE SOUTH 85 DEG. 0 MIN. WEST AND 200 FT. SOUTH OF AND PARALLEL WITH THE SOUTH R.O.W. LINE OF F. M. ROAD No. 1536, 867 FT., TO A POINT.

THENCE NORTH 89 DEG. 04 MIN. WEST AND 200 FT. SOUTH OF AND PARALLEL WITH THE SOUTH R.O.W. LINE OF SAID F. M. ROAD 1536, 1418.0 FT., TO A POINT.

THENCE SOUTH 59 DEG. 31 MIN. WEST 927.0 FT. TO A POINT.

THENCE NORTH 88 DEG. 05 MIN. WEST, 651.0 FT., TO A POINT.

THENCE NORTH 85 DEG. 53 MIN. WEST 764.0 FT., TO A POINT.

THENCE NORTH 73 DEG. 58 MIN. WEST 640.0 FT., TO A POINT.

THENCE NORTH 87 DEG. 31 MIN. WEST AND 200 FT., SOUTH OF AND PARALLEL WITH THE SOUTH R.O.W. LINE OF STATE F. M. ROAD No. 1536, 1404.0 FT. TO A POINT.

THENCE NORTH 89 DEG. 24 MIN. WEST 1398.0 FT. TO A POINT.

THENCE SOUTH 56 DEG. 03 MIN. WEST, AND 200.0 FT. SOUTH OF AND PARALLEL WITH THE SOUTH R.O.W. LINE OF SAID STATE F.M. ROAD 1536, 2179.0 FT. TO A POINT.

THENCE NORTH 88 DEG. 22 MIN. WEST AND PARALLEL WITH THE SOUTH R.O.W. LINE OF F. M. ROAD 1536, 2118.6 FT. TO A POINT.

THENCE SOUTH 88 DEG. 32 MIN. WEST AND 200 FT. SOUTH OF AND PARALLEL WITH THE SAID SOUTH R.O.W. LINE OF F. M. ROAD 1536, 217.0 FT. TO A POINT FOR CORNER, SAID POINT BEING 200 FT. EAST OF THE EAST R.O.W. LINE OF STATE HIGHWAY No. 19.

THENCE SOUTH 15 DEG. 42 MIN. EAST AND PARALLEL WITH AND 200 FT. EAST OF SAID EAST R.O.W. LINE OF STATE HIGHWAY No. 19, 4672 FT. TO A POINT.

THENCE SOUTH 2 DEG. 12 MIN. EAST AND PARALLEL WITH AND 200 FT. EAST OF THE EAST LINE OF SAID HIGHWAY 19, 4448.8 FT. TO A POINT.

THENCE SOUTH 18 DEG. 49 MIN. EAST AND PARALLEL WITH AND 200 FT. EAST OF SAID EAST R.O.W. LINE OF HIGHWAY No. 19, 1741.2 FT. TO A POINT.

THENCE SOUTH 5 DEG. 23 MIN. WEST AND PARALLEL WITH AND 200 FT. EAST OF SAID EAST R.O.W. LINE OF HIGHWAY 19, 5310.0 FT., A STAKE FOR CORNER IN THE S.B. LINE OF THE LAWRENCE E. GOLDSMITH 62 ACRE TRACT OF LAND.

THENCE WEST 0 DEG. 0 MIN. WITH THE S.B. LINE OF THE GOLDSMITH TRACT 200 FT., THE S.W. CORNER OF THE GOLDSMITH TRACT AND IN THE EAST R.O.W. LINE OF STATE HIGHWAY No. 19 TO THE PLACE OF BEGINNING AND CONTAINING 740.709 ACRES OF LAND.

VOL 348 PAGE 333

FURTHER, BY THIS PROCLAMATION, IT IS ORDERED THAT THIS PROCLAMATION BE ENTERED OF RECORD IN THE MINUTES OF THE HOPKINS COUNTY COMMISSIONERS COURT, AND FURTHER, THAT A CERTIFIED COPY OF THIS PROCLAMATION AS SO ENTERED, TOGETHER WITH A PLAT OF THE TOWN OF TIRA, BE RECORDED IN THE PROPER DEED RECORDS OF THIS COUNTY.

WITNESS MY HAND THIS 27TH DAY OF NOVEMBER, 1972.

L. E. Goldsmith  
L. E. GOLDSMITH  
COUNTY JUDGE  
HOPKINS COUNTY, TEXAS

CLERK'S CERTIFICATE

THE STATE OF TEXAS |

COUNTY OF HOPKINS | I, MARY ATTLESEY, County Clerk and Ex-Officio Clerk of the Commissioners' Court of Hopkins County, Texas, hereby certify that the above and foregoing is a true and correct copy of Proclamation dated November 27, 1972, as the same appears of record in Vol. P, Page 245, Minutes of the Commissioners' Court of Hopkins County, Texas.

GIVEN UNDER MY HAND AND SEAL OF SAID COURT, this the 16th day of May, A. D. 1973.

Mary Attlessey  
County Clerk and Ex-Officio Clerk of  
the Commissioners' Court of Hopkins  
County, Texas.

EXHIBIT B

BILLS AND FINANCIAL STATEMENT

All bills and the financial statement on file in the office of the County Clerk were approved on motion by Commissioner Prince, second by Commissioner Patterson and unanimous affirmative vote of the Court.

D. M. Jones requested that the optional road law be placed on the ballot for May 1st. He also requested changes in management of the Civic Center. He was advised that upon being presented with a proper petition, the optional road law would be placed on the ballot.

COMO HOUSING AUTHORITY

The Como Housing Authority requested that the Court adopt a resolution waiving County taxation for the Como Housing Authority property in Como. Motion was made by Commissioner Halcomb that the request for the resolution waiving taxes be denied. Second was by Commissioner Prince and it was approved unanimously.

9 1 1 Addressing

A representative of Winkelmann & Associates, Inc. discussed with the Court the mapping of the County for emergency or 911 purposes, especially in the rural areas. The Court took the matter under consideration.

There being no further business, motion to recess until Thursday was made by Commissioner Prince, seconded by Commissioner Patterson and approved.

January 28, 1993

Commissioners' Court re-entered their regular session on January 28, 1993, at 9:00 A.M. with Judge Pogue presiding and Commissioners Halcomb, Patterson and Prince present. Motion to go back in session was made by Commissioner Halcomb, seconded by Commissioner Prince and approved.

COUNTY CLERK RECORDS

County Clerk, Mary Attlesey, requested that the Court approve re-creation and restoration of approximately 40 record books in the County Clerk's Office, to be paid from the Records Management Fund collected by that office. Motion approving the Request was made by Commissioner Halcomb, seconded by Commissioner Patterson and approved.

GREIVANCE COMMITTEE

The following persons were selected to serve as a greivance committee for the year 1993: Kenneth Ward, Weldon Dewitt, Roy McGahee, Tony Bible, Jesse Orr, P. J. Ponder, Mike Temples, Harold Wright and Sherry McGraw

PETROLEUM REFUND AGREEMENT

The following agreement for obtaining a refund on Gulf Petroleum Products was approved on motion of Commissioner Prince, second for Commissioner Halcomb and unanimous approval of the board:

594

VOTE TABULATION MACHINE

The Court considered the purchase of the vote tabulation machine which has been on trial since the August 10, 1991, Constitutional Amendment election. Representatives of the Company were present to answer questions concerning the equipment. Motion was made by Commissioner Halcomb that the County not buy the machine at this time. Second was by Commissioner Prince and it was unanimously approved.

CONTRACT FOR 911 ADDRESSING

On motion by Commissioner Halcomb, second by Commissioner Stewart and unanimous approval of the Court The County was authorized to enter into an Interlocal Agreement with the Advisory Commission on State Emergency Communications for obtaining \$3000 to be used to complete an addressing system to be used in tracking EMS calls and identify the proportion of calls related to motor vehicle incidents.

ARCHITECT CONTRACT

The contract of Simons, Burch & Clark as architect for the proposed Civic Center project was presented to the Court. The firm was recommended by the Building Committee of the Civic Center Board and is to present plans for possible enlargement of the Exhibit Hall and air conditioning of the arena. Objections to acceptance of the grant money were voiced by J. W. Murphy. After considerable discussion, motion to accept the Building Committee's recommendation and approve the contract with the firm of Simons, Burch & Clark was made by Commissioner Tully, seconded by Commissioner Halcomb and approved unanimously.

There was further discussion concerning access to rest room areas of the Civic Center after the building is closed for the day. Rod Henderson, manager, stated that the building could be left open if the Lessee would accept full responsibility for all contents of the building.

There being no further business, motion to adjourn was made by Commissioner Halcomb, seconded by Commissioner Prince and approved.

MINUTES APPROVED April 27, 1992:

Joe R. Beyer County Judge  
Edna Stewart Comm. # 1  
Herb Halcomb Comm. # 2  
Dave Patterson Comm. # 3  
Calvin Prince Comm. # 4

ATTEST: Mary Ottensief County Clerk

AUDIT REPORT

The annual audit report for the 1992 fiscal year was presented by the firm of Gollob, Morgan, Peddy and Co. represented by Barbara Bass. After discussion of the report and graphs by Ms. Bass, motion to approve and accept the audit was made by Commissioner Halcomb, seconded by Commissioner Prince and approved unanimously..

James Miller met with the Court to present a petition for the abandonment of a road and to suggest that the Court consider establishing load limits for county roads. The petition will be held for acceptance on Feb. 24th.

The Court then entered executive session on motion by Commissioner Halcomb, second by Commissioner Patterson and unanimous approval of the Court.

After discussion of civic center matters with the manager Rod Henderson, the court re-entered their regular session on motion by Commissioner Patterson, second by Commissioner Prince and approval of the Court.

Judge Pogue advised that no vote on any matter would be taken by the Court but that the Civic Center manager, Rod Henderson, would be the co-ordinator between the Civic Center Board and the Commissioners Court and make regular reports to the Court. It was also agreed that jail inmates working at the civic center would be provided clothing that would identify them from other workers and distinguish them from the general public.

Motion to recess until Feb. 24th at 10:00 A.M. was made by Commissioner Sparks, seconded by Commissioner Halcomb and approved.

Work Session 2/24/93

The Court met in a work session to discuss the 911 indexing services on February 24, 1993. Mike Pehle with the SSPD was present. Representatives of several firms were present. John Cooper, representing Lynn Swanner and Steve Hudson of Horizon Associates were present to discuss the work and charges for their companies as well as representatives of Winkelmann & Associates, Inc. of Dallas and Bucher, Willis & Ratliff of Tyler. No decisions were made.

On Feb. 24, 1993, at 2:00 P.M. the Court re-entered their regular session on motion by Commissioner Halcomb, second by Commissioner Sparks and unanimous approval of the Court. All members were present.

BIDS - GOODWILL BUILDING

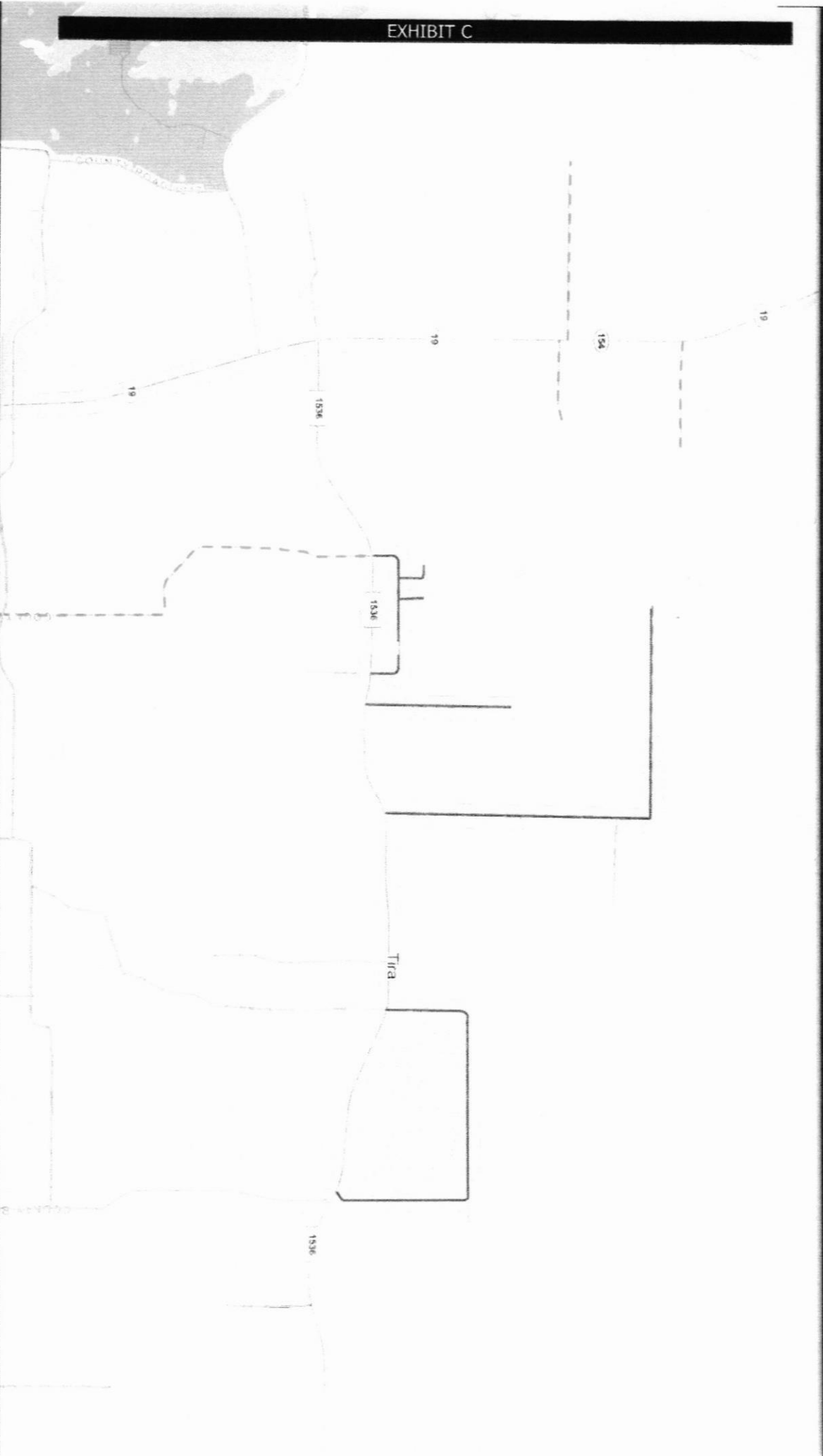
Bids were opened for the Goodwill Building expansion from the following firms: Westbrook Ready Mix, Twin H. Construction, M. Hanna, Bell Concrete, Dalton Alexander dba ASAP Enterprises, N E T Asphalt & Construction, Daniel Steel Inc. Lofland Co. American Steel Co., Midwest/Metallic, Design Bldg. Systems, 5 star Construction, PBI Supply, Brite Insulations, Cooper Plastering, Overhead Door of Tyler, Overhead Door of Sherman-Denison, Gene Moore, Painting, Tri Lakes Air Conditioning, E-TEX Mechanical, KW Electric, Triple E Electric and Wire, Inc.

The Court will consider the bids until the next meeting date on March 8, 1993.

ACCOUNTS APPROVED

Bills of the Civic Center Rodeo Committee were approved and ordered to be paid on motion by Commissioner Patterson, second by Commissioner Prince and unanimous approval of the Court.

EXHIBIT C



County: Hopkins | User Name: Donna Goins\_HOPKINS | Starting Mileage: 840 | Mileage Change: 0.31 | Updated Mileage: 840.3



Hopkins County  
Rural Transportation Maintenance and Construction Guidelines  
2024-2025

**\*\* All County Roads in the Hopkins County Rural Transportation System are 3<sup>rd</sup> Class**

**MAINTENANCE of COUNTY ROADS**

TRANSPORTATION CODE

TITLE 6. ROADWAYS

SUBTITLE C. COUNTY ROADS AND BRIDGES

CHAPTER 251. GENERAL COUNTY AUTHORITY RELATING TO ROADS AND BRIDGES

**SHREDDING & BRUSH CUTTING OF RIGHT-OF-WAYS:**

All right-of-ways will be shredded at least 2 times from May through October.

Times will vary based on weather conditions and available manpower. The width of clearing will be at the commissioner's discretion.

**DIRT ROADS:**

All dirt roads will be bladed at a minimum of 2 times yearly. \*Drainage will be assessed and maintained as needed. Times will vary based on weather conditions and available manpower.

**ROCK/FLEX BASE:**

All rock/flex base roads will be bladed at a minimum of 2 times yearly. \*Drainage will be assessed and maintained as needed. Rock/flex base will be refreshed per Commissioner's judgment and budget. Times will vary based on weather conditions and available manpower.

**OIL SAND ROADS:**

All oil sand roads will be maintained by one of 4 methods per the Commissioner's judgment and budget. Times will vary based on weather conditions & available manpower.

1. Base Failure aka blowout, pushout, mashout — digging out the existing area and filling it with sub-base and oil sand.
2. Pot Holes — hand patching technique
3. \*Drainage
4. Overlaying

**CHIPSEAL ROADS:**

All chipseal roads will be maintained by one of 3 methods per the Commissioner's judgment and budget. Times will vary based on weather conditions and available manpower.

1. \*Drainage
2. Patch with oil sand
3. Overlaying

**ASPHALT ROADS:**

All asphalt roads will be maintained by one of 2 methods per the Commissioner's judgment & budget. Times will vary based on weather conditions & available manpower.

1. Sealing cracks
2. \*Drainage

# ROAD CONSTRUCTION

## **DIRT ROADS:**

\*Drainage will be established. Road right-of-way will be 60' or no less than 40', where at all possible within established fence lines.

## **ROCK/FLEX BASE:**

\*Drainage will be established. Road right-of-way will be 60' or no less than 40', where at all possible within established fence lines. Surface will depend on the right-of-way. Flex base will be 4" to 6" in depth.

## **OIL SAND ROADS:**

Method #1:

\*Drainage will be established. Road right-of-way will be 60' or no less than 40', where at all possible within established fence lines. Will have a flex base substructure of 4"-6" in depth. The road surface, depending on right-of-way, will be compacted oil sand 2" in depth.

Method #2:

\*Drainage will be established. Road right-of-way will be 60' or no less than 40', where at all possible within established fence lines. Old road surface/base will be rehabilitated at a depth of 6". Re-claimed material will be recycled with a bonding agent and compacted.

## **CHIPSEAL ROADS:**

\*Drainage will be established. Road right-of-way will be 60' or no less than 40'. Will have a flex base substructure of 4"-6" in depth, where at all possible within the established fence lines. The road surface, depending on right-of-way, will be compacted oil sand 2" in depth. The chip seal will be applied to this sub-surface.

## **ASPHALT ROADS:**

\*Drainage will be established. Road right-of-way will be 60' or no less than 40'. Base stabilization.

\*Drainage consists of clearing brush, establishing or clearing the ditches, cross culverts, and driveway culverts.

## **CONSTRUCTION METHODS ARE PER COUNTY COMMISSIONERS COURT**

TRANSPORTATION CODE

TITLE 6. ROADWAYS

SUBTITLE C. COUNTY ROADS AND BRIDGES

CHAPTER 251. GENERAL COUNTY AUTHORITY RELATING TO ROADS AND BRIDGES

# **Hopkins County Precinct Roads**

Process for Re-habilitating 1 mile of County Road that is DIRT

Driving Surface: Average 16 ft.

## **CONSTRUCTION:**

Site safety measures: 36 hours

Establish Drainage: 36 hours

Establish Crown in road surface: 24 hours

Compact Road Surface: 24 hours

## **EQUIPMENT:**

Backhoe/loader... FEMA #8382... \$69.08 per hour

Trailer-haul truck... FEMA #8601... \$17.10 per hour

Dump Truck (3)... FEMA #8721... \$74.83 per hour per truck

Cat 140 with 14 Ft mold blade... FEMA #8332... \$164.35

Tractor/pull packer... FEMA #8790 & 8228... \$57.92 & \$16.07

1/2 ton truck... FEMA #8801... \$16.68

## **LABOR/SUPERVISOR**

**MATERIAL:** Dirt

**\*Only as needed**

# **Hopkins County Precinct Roads**

Process for Re-habilitating 1 mile of County Road that is ROCK

Driving Surface: Average 16 ft.

## **CONSTRUCTION:**

Site safety measures: 36 hours

Establish Drainage: 36 hours

Establish Crown in road surface: 24 hours

Compact Road Surface: 24 hours

## **EQUIPMENT:**

Backhoe/loader... FEMA #8382... \$69.08 per hour

Trailer-haul truck... FEMA #8601... \$17.10 per hour

Dump Truck (3)... FEMA #8721... \$74.83 per hour per truck

Cat 140 with 14 Ft mold blade... FEMA #8332... \$164.35

Tractor/pull packer... FEMA #8790 & 8228... \$57.92 & \$16.07

1/2 ton truck... FEMA #8801... \$16.68

## **LABOR/SUPERVISOR.: 7**

**MATERIAL:** Rock

**\*Only as needed**

# Hopkins County Precinct Roads

Process for Re-habilitating 1 mile of County Road by MIXING CRUDE OIL  
Driving Surface: Average 16 ft.

## **CONSTRUCTION:**

Site Safety: 32 hours

Drainage: 16 hours

Reclaim base: 32 hours

Mixers (2): 24 hours

Oil Truck: 24 hours

2 Blades for compaction & mixing & crown: 64 hours

Compact Road surface: 16 hours

## **EQUIPMENT:**

2 Bomag Reclaimer/Stablizer & Mix: \$192.88 (Rate Equipment Watch/blue book)

Backhoe/Loader... FEMA #8382... \$69.08 per hour

Trailer-haul truck... FEMA #8601... \$17.10 per hr

Dump Truck (2)... FEMA #8721... \$74.83 per hr x 2

2 Cat 140 with 14 ft mold blade ... FEMA #8332...\$164.35 per hr

Pneumatic roller... FEMA #8223... \$122.99 per hour

Steel wheel roller... FEMA #8222... \$64.73 per hour

1/2 ton truck... FEMA #8801... \$16.68 per hour

## **LABOR/SUPERVISOR: 6**

## **MATERIAL:**

Crude oil is mixed based on 40 barrels per tenth. In May of 2024 crude was \$79.67 per barrel. Crude is always based on a % plus the price of West Texas Crude Oil. \$3,186.80 per tenth.

# Hopkins County Precinct Roads

Process for Re-habilitating 1 mile of County Road with OIL SAND/ASPHALT  
Driving Surface: Average 16 ft.

## CONSTRUCTION:

Site safety measures: 24 hours

Reclaim base: 32 hours

Compact Road Surface: 16 hours

Apply Oil Sand/Asphalt surface: 16 hours

Drainage: 16 hours

## EQUIPMENT:

Bomag Reclaimer/Stablizer... \$192.88 Equipment Watch/Blue Book

Backhoe/loader... FEMA #8382... \$69.08 per hour

Trailer-haul truck... FEMA #8601... \$17.10 per hour

Dump truck (2)... FEMA #8721... \$74.83 per hour

Cat 140 with 14 Ft mold blade... FEMA #8332... \$164.35

Pneumatic Roller ... FEMA #8223... \$122.99 per hour

Steel wheel roller... FEMA #8222... \$64.73

1/2 ton truck... FEMA #8801... \$16.68

## LABOR/SUPERVISOR: 6

## MATERIAL:

Resurface with pre-mix oil sand

100 tons per 1/10th mile @ \$77.00 per ton = \$7,700 per tenth x 10 = \$77,000 per mile

## **Hopkins County Debris Management Guidelines 2024-2025**

In an effort to effectively maintain the traffic flow of county roads in Hopkins County, all debris cleared from Hopkins County roads is placed on the side of the road until collected. Upon removal from the roadside, all debris is picked up with a backhoe and loaded into a large dump truck(s) designed to hold an average of 8 cubic yards. Operated by county road crew members, chainsaws are needed to complete this task. Once transported to the precinct barn, the debris is unloaded as close as possible to the designated burn site. Operated by a county crew member, a backhoe is used to push all debris to a predetermined area for burning.

The sites continuously burn during each scheduled work day. This is an ongoing process.

There are six burn sites in Hopkins County certified by TCEQ (Texas Commission on Environmental Quality). The locations are as follows:

Precinct 1 County Barn, 5516 Hwy 19 South, Sulphur Springs, TX 75482

Precinct 1 Secondary Site, CR 1116, Brashear, TX 75420 (property ID R000019486)

Precinct 2 County Barn, 12080 Hwy 11 E, Como, TX 75431

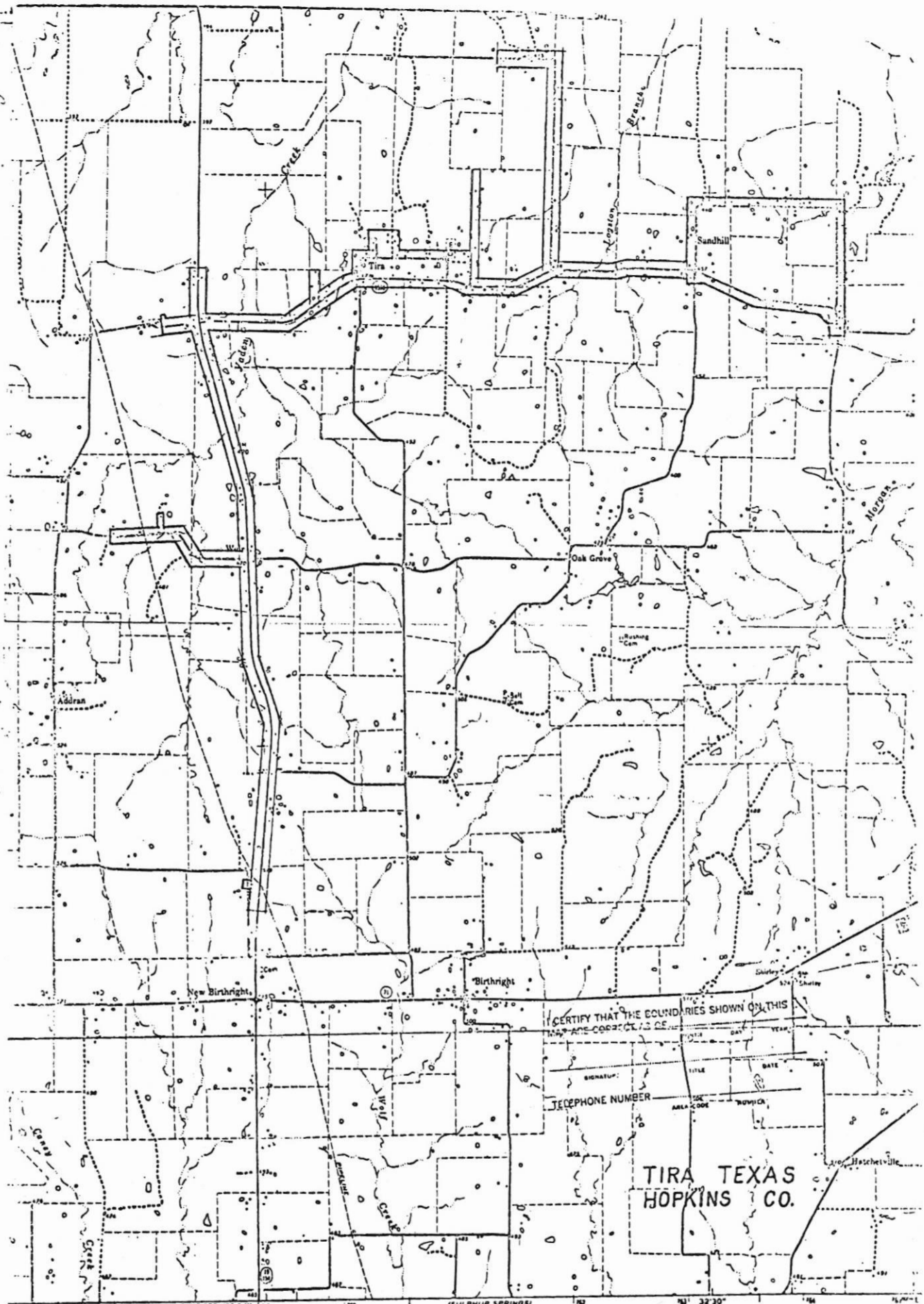
Precinct 3 County Barn, 583 CR 3564, Dike, TX 75437

Precinct 4 Cumby Site, FM 2653, South 1/7 miles from Hwy 11

Precinct 4 North Hopkins Storage Site, 1994 FM 71 W, Sulphur Springs, TX 75482

All locations are under 24-hour surveillance and monitored by the respective precinct's Commissioner.

1013487g-374

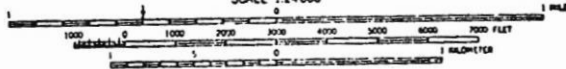


CERTIFY THAT THE BOUNDARIES SHOWN ON THIS MAP ARE CORRECT AS OF \_\_\_\_\_ DAY \_\_\_\_\_ YEAR.

SIGNATURE: \_\_\_\_\_ TITLE \_\_\_\_\_ DATE \_\_\_\_\_ SCALE \_\_\_\_\_ TELEPHONE NUMBER \_\_\_\_\_ AREA CODE \_\_\_\_\_ TOWNSHIP \_\_\_\_\_

TIRA TEXAS HOPKINS CO.

1:24,000 FEET SULPHUR SPRINGS 8 MI. 35' 1:24,000 FEET SULPHUR SPRINGS 8 MI. 35' 1:24,000 FEET SULPHUR SPRINGS 8 MI. 35' 1:24,000 FEET SULPHUR SPRINGS 8 MI. 35' 1:24,000 FEET SULPHUR SPRINGS 8 MI. 35'



CONTOUR INTERVAL 10 FEET  
DOTTED LINES REPRESENT 5 FOOT CONTOURS  
DATUM IS MEAN SEA LEVEL

1973 GRID AND 1964 MAGNETIC NORTH DECLINATION AT CENTER OF SHEET



THIS MAP COMPLIES WITH NATIONAL MAP ACCURACY STANDARDS FOR SALE BY U. S. GEOLOGICAL SURVEY, DENVER, COLORADO 80275, OR WASHINGTON, D. C. 20242 A FOLDER DESCRIBING TOPOGRAPHIC MAPS AND SYMBOLS IS AVAILABLE ON REQUEST

FILED FOR RECORD THE 16 DAY OF MAY, A.D. 1973, AT 11:04 A. M.  
 RECORDED THE 17 DAY OF MAY, A.D. 1973, AT 2 O'CLOCK, P.M.  
 MARY ATLESEY, CLERK COUNTY COURT, HOPKINS COUNTY, TEXAS.  
 BY Bethel Pendleton DEPUTY